

Anti-SPINK5 / LEKTI Rabbit Monoclonal Antibody
Catalog # ABO16378**Specification**

Anti-SPINK5 / LEKTI Rabbit Monoclonal Antibody - Product Information

| | |
|-------------------|------------------------|
| Application | WB |
| Primary Accession | O9NQ38 |
| Host | Rabbit |
| Isotype | IgG |
| Reactivity | Rat, Human, Mouse |
| Clonality | Monoclonal |
| Format | Liquid |

Description

Anti-SPINK5 / LEKTI Rabbit Monoclonal Antibody . Tested in WB application. This antibody reacts with Human, Mouse, Rat.

Anti-SPINK5 / LEKTI Rabbit Monoclonal Antibody - Additional Information

Gene ID 11005

Other Names

Serine protease inhibitor Kazal-type 5, Lympho-epithelial Kazal-type-related inhibitor, LEKTI, Hemofiltrate peptide HF6478, Hemofiltrate peptide HF7665, SPINK5

Calculated MW

121 kDa KDa

Application Details

WB 1:500-1:2000

Contents

Rabbit IgG in phosphate buffered saline, pH 7.4, 150mM NaCl, 0.02% sodium azide and 50% glycerol, 0.4-0.5mg/ml BSA.

Immunogen

A synthesized peptide derived from human SPINK5 / LEKTI

Purification

Affinity-chromatography

Storage

Store at -20°C for one year. For short term storage and frequent use, store at 4°C for up to one month. Avoid repeated freeze-thaw cycles.

Anti-SPINK5 / LEKTI Rabbit Monoclonal Antibody - Protein Information

Name SPINK5

Function

Serine protease inhibitor, probably important for the anti- inflammatory and/or antimicrobial protection of mucous epithelia. Contribute to the integrity and protective barrier function of the skin by regulating the activity of defense-activating and desquamation- involved proteases. Inhibits KLK5, it's major target, in a pH-dependent manner. Inhibits KLK7, KLK14 CASP14, and trypsin.

Cellular Location

Secreted.

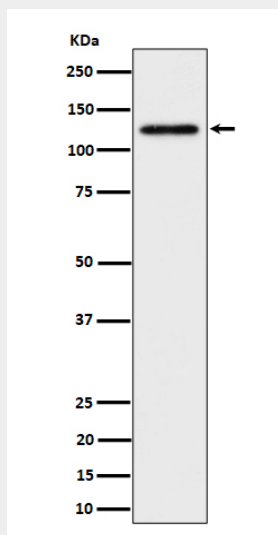
Tissue Location

Highly expressed in the thymus and stratum corneum. Also found in the oral mucosa, parathyroid gland, Bartholin's glands, tonsils, and vaginal epithelium. Very low levels are detected in lung, kidney, and prostate.

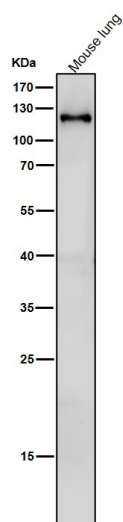
Anti-SPINK5 / LEKTI Rabbit Monoclonal Antibody - Protocols

Provided below are standard protocols that you may find useful for product applications.

- [Western Blot](#)
- [Blocking Peptides](#)
- [Dot Blot](#)
- [Immunohistochemistry](#)
- [Immunofluorescence](#)
- [Immunoprecipitation](#)
- [Flow Cytometry](#)
- [Cell Culture](#)

Anti-SPINK5 / LEKTI Rabbit Monoclonal Antibody - Images

Western blot analysis of SPINK5 / LEKTI expression in HeLa cell lysate.



All lanes use the Antibody at 1:1K dilution for 1 hour at room temperature.