

Anti-EXOC3 Rabbit Monoclonal Antibody
Catalog # ABO16390**Specification**

Anti-EXOC3 Rabbit Monoclonal Antibody - Product Information

Application	WB, IHC, IF, ICC, IP
Primary Accession	O60645
Host	Rabbit
Isotype	IgG
Reactivity	Rat, Human, Mouse
Clonality	Monoclonal
Format	Liquid

Description

Anti-EXOC3 Rabbit Monoclonal Antibody . Tested in WB, IHC, ICC/IF, IP applications. This antibody reacts with Human, Mouse, Rat.

Anti-EXOC3 Rabbit Monoclonal Antibody - Additional Information

Gene ID 11336

Other Names

Exocyst complex component 3, Exocyst complex component Sec6, EXOC3, SEC6, SEC6L1

Calculated MW

80 kDa KDa

Application Details

WB 1:500-1:2000
IHC 1:50-1:200
ICC/IF 1:50-1:200
IP 1:50

Contents

Rabbit IgG in phosphate buffered saline, pH 7.4, 150mM NaCl, 0.02% sodium azide and 50% glycerol, 0.4-0.5mg/ml BSA.

Immunogen

A synthesized peptide derived from human EXOC3

Purification

Affinity-chromatography

Storage

Store at -20°C for one year. For short term storage and frequent use, store at 4°C for up to one month. Avoid repeated freeze-thaw cycles.

Anti-EXOC3 Rabbit Monoclonal Antibody - Protein Information

Name EXOC3

Synonyms SEC6, SEC6L1**Function**

Component of the exocyst complex involved in the docking of exocytic vesicles with fusion sites on the plasma membrane.

Cellular Location

Cytoplasm {ECO:0000250|UniProtKB:O54921}. Cytoplasm, perinuclear region {ECO:0000250|UniProtKB:O54921}. Cell projection, growth cone {ECO:0000250|UniProtKB:O54921}. Midbody. Golgi apparatus. Cell projection, neuron projection {ECO:0000250|UniProtKB:Q62825}. Note=Perinuclear in undifferentiated cells. Redistributes to growing neurites and growth cones during neuronal differentiation (By similarity). During mitosis, early recruitment to the midbody requires RALA, but not RALB, and EXOC2. In late stages of cytokinesis, localization to the midbody is RALB- dependent (PubMed:18756269). {ECO:0000250|UniProtKB:O54921, ECO:0000269|PubMed:18756269}

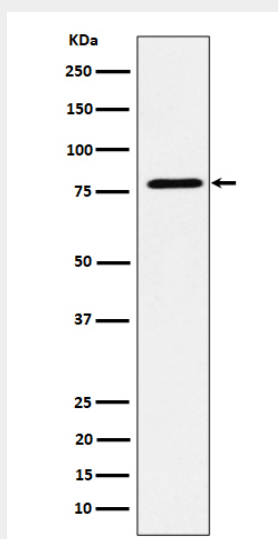
Tissue Location

Expressed in epididymis (at protein level).

Anti-EXOC3 Rabbit Monoclonal Antibody - Protocols

Provided below are standard protocols that you may find useful for product applications.

- [Western Blot](#)
- [Blocking Peptides](#)
- [Dot Blot](#)
- [Immunohistochemistry](#)
- [Immunofluorescence](#)
- [Immunoprecipitation](#)
- [Flow Cytometry](#)
- [Cell Culture](#)

Anti-EXOC3 Rabbit Monoclonal Antibody - Images

Western blot analysis of EXOC3 expression in MCF7 cell lysate.