

Anti-Syndecan 3 Rabbit Monoclonal Antibody
Catalog # ABO16397**Specification**

Anti-Syndecan 3 Rabbit Monoclonal Antibody - Product Information

Application	WB
Primary Accession	O75056
Host	Rabbit
Isotype	IgG
Reactivity	Rat, Human, Mouse
Clonality	Monoclonal
Format	Liquid

Description

Anti-Syndecan 3 Rabbit Monoclonal Antibody . Tested in WB application. This antibody reacts with Human, Mouse, Rat.

Anti-Syndecan 3 Rabbit Monoclonal Antibody - Additional Information

Gene ID 9672

Other Names

Syndecan-3, SYND3, SDC3, KIAA0468

Calculated MW

60 kDa KDa

Application Details

WB 1:500-1:2000

Contents

Rabbit IgG in phosphate buffered saline, pH 7.4, 150mM NaCl, 0.02% sodium azide and 50% glycerol, 0.4-0.5mg/ml BSA.

Immunogen

A synthesized peptide derived from human Syndecan 3

Purification

Affinity-chromatography

Storage

Store at -20°C for one year. For short term storage and frequent use, store at 4°C for up to one month. Avoid repeated freeze-thaw cycles.

Anti-Syndecan 3 Rabbit Monoclonal Antibody - Protein Information

Name SDC3

Synonyms KIAA0468

Function

Cell surface proteoglycan that may bear heparan sulfate (By similarity). May have a role in the organization of cell shape by affecting the actin cytoskeleton, possibly by transferring signals from the cell surface in a sugar-dependent mechanism.

Cellular Location

Cell membrane; Single-pass type I membrane protein

Tissue Location

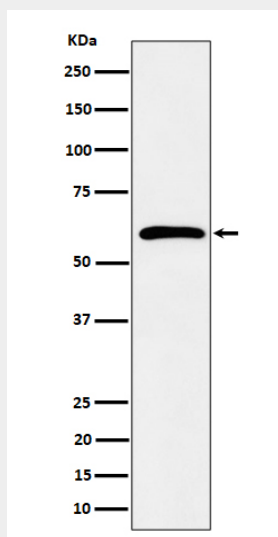
Expressed in the nervous system, the adrenal gland, and the spleen.

Anti-Syndecan 3 Rabbit Monoclonal Antibody - Protocols

Provided below are standard protocols that you may find useful for product applications.

- [Western Blot](#)
- [Blocking Peptides](#)
- [Dot Blot](#)
- [Immunohistochemistry](#)
- [Immunofluorescence](#)
- [Immunoprecipitation](#)
- [Flow Cytometry](#)
- [Cell Culture](#)

Anti-Syndecan 3 Rabbit Monoclonal Antibody - Images



Western blot analysis of Syndecan 3 expression in K562 cell lysate.