

**Anti-WDR1 Rabbit Monoclonal Antibody**  
**Catalog # ABO16411****Specification**

---

**Anti-WDR1 Rabbit Monoclonal Antibody - Product Information**

Application	WB, IHC, IF, ICC
Primary Accession	<a href="#">O75083</a>
Host	Rabbit
Isotype	IgG
Reactivity	Human
Clonality	Monoclonal
Format	Liquid

**Description**

Anti-WDR1 Rabbit Monoclonal Antibody . Tested in WB, IHC, ICC/IF applications. This antibody reacts with Human.

**Anti-WDR1 Rabbit Monoclonal Antibody - Additional Information**

**Gene ID** 9948

**Other Names**

WD repeat-containing protein 1, Actin-interacting protein 1, AIP1, NORI-1, WDR1

**Calculated MW**

66 kDa KDa

**Application Details**

WB 1:500-1:2000<br>IHC 1:50-1:200<br>ICC/IF 1:50-1:200

**Contents**

Rabbit IgG in phosphate buffered saline, pH 7.4, 150mM NaCl, 0.02% sodium azide and 50% glycerol, 0.4-0.5mg/ml BSA.

**Immunogen**

A synthesized peptide derived from human WDR1

**Purification**

Affinity-chromatography

Storage

**Store at -20°C for one year. For short term storage and frequent use, store at 4°C for up to one month. Avoid repeated freeze-thaw cycles.**

**Anti-WDR1 Rabbit Monoclonal Antibody - Protein Information**

**Name** WDR1

**Function**

Induces disassembly of actin filaments in conjunction with ADF/cofilin family proteins (PubMed:<a href="http://www.uniprot.org/citations/15629458" target="\_blank">15629458</a>, PubMed:<a href="http://www.uniprot.org/citations/27557945" target="\_blank">27557945</a>, PubMed:<a href="http://www.uniprot.org/citations/29751004" target="\_blank">29751004</a>). Enhances cofilin-mediated actin severing (By similarity). Involved in cytokinesis. Involved in chemotactic cell migration by restricting lamellipodial membrane protrusions (PubMed:<a href="http://www.uniprot.org/citations/18494608" target="\_blank">18494608</a>). Involved in myocardium sarcomere organization. Required for cardiomyocyte growth and maintenance (By similarity). Involved in megakaryocyte maturation and platelet shedding. Required for the establishment of planar cell polarity (PCP) during follicular epithelium development and for cell shape changes during PCP; the function seems to implicate cooperation with CFL1 and/or DSTN/ADF. Involved in the generation/maintenance of cortical tension (By similarity). Involved in assembly and maintenance of epithelial apical cell junctions and plays a role in the organization of the perijunctional actomyosin belt (PubMed:<a href="http://www.uniprot.org/citations/25792565" target="\_blank">25792565</a>).

**Cellular Location**

Cytoplasm. Cytoplasm, cytoskeleton {ECO:0000250|UniProtKB:Q5RKI0}. Cell projection, podosome. Cell junction

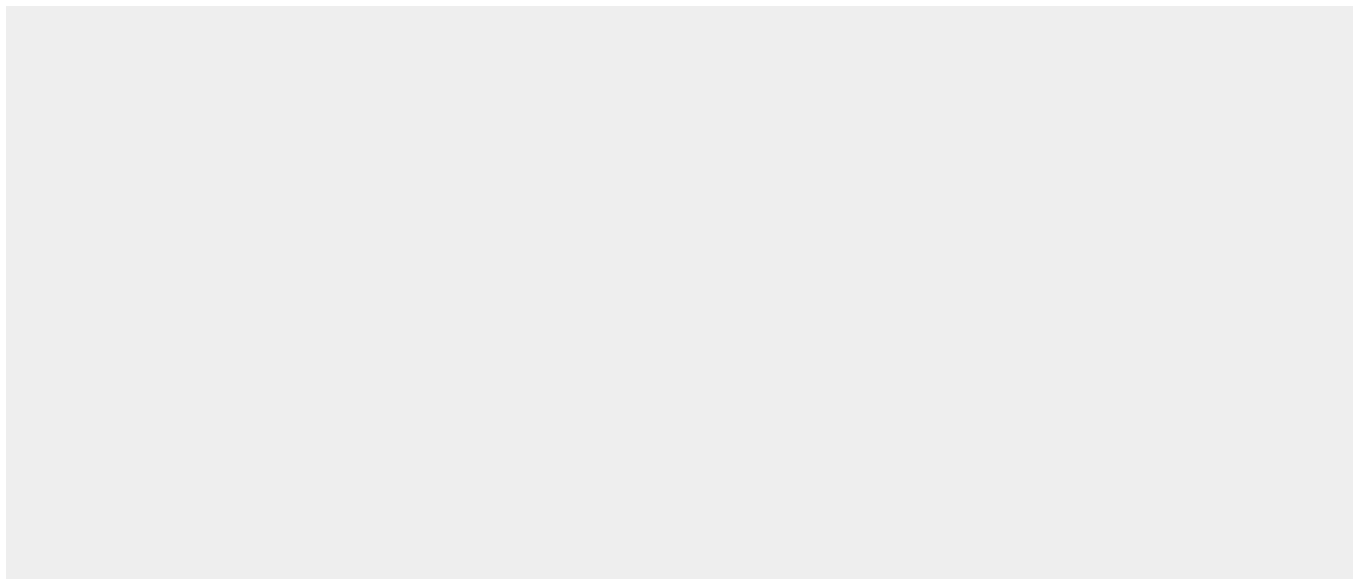
**Tissue Location**

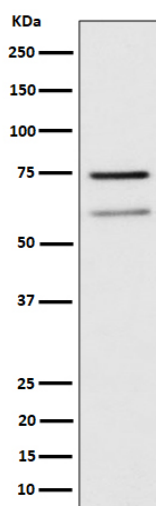
Expressed in peripheral blood mononuclear cells (at protein level).

**Anti-WDR1 Rabbit Monoclonal Antibody - Protocols**

Provided below are standard protocols that you may find useful for product applications.

- [Western Blot](#)
- [Blocking Peptides](#)
- [Dot Blot](#)
- [Immunohistochemistry](#)
- [Immunofluorescence](#)
- [Immunoprecipitation](#)
- [Flow Cytometry](#)
- [Cell Culture](#)

**Anti-WDR1 Rabbit Monoclonal Antibody - Images**



Western blot analysis of WDR1 expression in Raji cell lysate.