

**Anti-NDUFA1 Rabbit Monoclonal Antibody**  
**Catalog # ABO16416****Specification**

---

**Anti-NDUFA1 Rabbit Monoclonal Antibody - Product Information**

Application	WB, IHC
Primary Accession	<a href="#">O15239</a>
Host	Rabbit
Isotype	IgG
Reactivity	Human
Clonality	Monoclonal
Format	Liquid

**Description**

Anti-NDUFA1 Rabbit Monoclonal Antibody . Tested in WB, IHC applications. This antibody reacts with Human.

**Anti-NDUFA1 Rabbit Monoclonal Antibody - Additional Information**

**Gene ID** 4694

**Other Names**

NADH dehydrogenase [ubiquinone] 1 alpha subcomplex subunit 1, Complex I-MWFE, CI-MWFE, NADH-ubiquinone oxidoreductase MWFE subunit, NDUFA1

**Calculated MW**

10 kDa KDa

**Application Details**

WB 1:500-1:2000<br>IHC 1:50-1:200

**Contents**

Rabbit IgG in phosphate buffered saline, pH 7.4, 150mM NaCl, 0.02% sodium azide and 50% glycerol, 0.4-0.5mg/ml BSA.

**Immunogen**

A synthesized peptide derived from human NDUFA1

**Purification**

Affinity-chromatography

**Storage**

**Store at -20°C for one year. For short term storage and frequent use, store at 4°C for up to one month. Avoid repeated freeze-thaw cycles.**

**Anti-NDUFA1 Rabbit Monoclonal Antibody - Protein Information**

**Name** NDUFA1

**Function**

Accessory subunit of the mitochondrial membrane respiratory chain NADH dehydrogenase (Complex I), that is believed not to be involved in catalysis. Complex I functions in the transfer of electrons from NADH to the respiratory chain. The immediate electron acceptor for the enzyme is believed to be ubiquinone.

**Cellular Location**

Mitochondrion inner membrane; Single-pass membrane protein; Matrix side

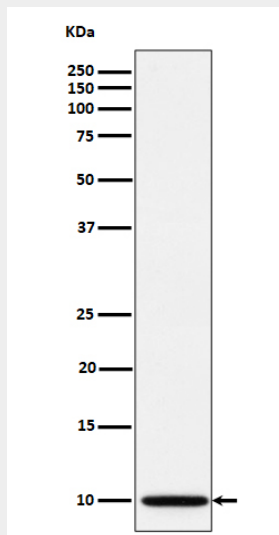
**Tissue Location**

Primarily expressed in heart and skeletal muscle.

**Anti-NDUFA1 Rabbit Monoclonal Antibody - Protocols**

Provided below are standard protocols that you may find useful for product applications.

- [Western Blot](#)
- [Blocking Peptides](#)
- [Dot Blot](#)
- [Immunohistochemistry](#)
- [Immunofluorescence](#)
- [Immunoprecipitation](#)
- [Flow Cytometry](#)
- [Cell Culture](#)

**Anti-NDUFA1 Rabbit Monoclonal Antibody - Images**

Western blot analysis of NDUFA1 expression in A673 cell lysate.