

Anti-TAPP1 Rabbit Monoclonal Antibody
Catalog # ABO16417**Specification**

Anti-TAPP1 Rabbit Monoclonal Antibody - Product Information

Application	WB
Primary Accession	Q9HB21
Host	Rabbit
Isotype	IgG
Reactivity	Rat, Human, Mouse
Clonality	Monoclonal
Format	Liquid

Description

Anti-TAPP1 Rabbit Monoclonal Antibody . Tested in WB application. This antibody reacts with Human, Mouse, Rat.

Anti-TAPP1 Rabbit Monoclonal Antibody - Additional Information

Gene ID 59338

Other Names

Pleckstrin homology domain-containing family A member 1, PH domain-containing family A member 1, Tandem PH domain-containing protein 1, TAPP-1, PLEKHA1, TAPP1

Calculated MW

43 kDa KDa

Application Details

WB 1:500-1:2000

Contents

Rabbit IgG in phosphate buffered saline, pH 7.4, 150mM NaCl, 0.02% sodium azide and 50% glycerol, 0.4-0.5mg/ml BSA.

Immunogen

A synthesized peptide derived from human TAPP1

Purification

Affinity-chromatography

Storage

Store at -20°C for one year. For short term storage and frequent use, store at 4°C for up to one month. Avoid repeated freeze-thaw cycles.

Anti-TAPP1 Rabbit Monoclonal Antibody - Protein Information

Name PLEKHA1

Synonyms TAPP1**Function**

Binds specifically to phosphatidylinositol 3,4-diphosphate (PtdIns3,4P2), but not to other phosphoinositides. May recruit other proteins to the plasma membrane.

Cellular Location

Cytoplasm. Cell membrane; Peripheral membrane protein. Nucleus. Note=Locates to the plasma membrane after treatments that stimulate the production of PtdIns3,4P2

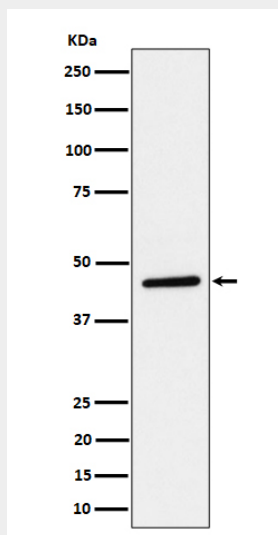
Tissue Location

Highly expressed in skeletal muscle, thymus, pancreas, placenta and lung. Detected at low levels in brain, heart, peripheral blood leukocytes, testis, ovary, spinal cord, thyroid, kidney, liver, small intestine and colon.

Anti-TAPP1 Rabbit Monoclonal Antibody - Protocols

Provided below are standard protocols that you may find useful for product applications.

- [Western Blot](#)
- [Blocking Peptides](#)
- [Dot Blot](#)
- [Immunohistochemistry](#)
- [Immunofluorescence](#)
- [Immunoprecipitation](#)
- [Flow Cytometry](#)
- [Cell Culture](#)

Anti-TAPP1 Rabbit Monoclonal Antibody - Images

Western blot analysis of TAPP1 expression in HeLa cell lysate.