

**Anti-Pyrophosphatase 1 Rabbit Monoclonal Antibody**  
**Catalog # ABO16418****Specification**

---

**Anti-Pyrophosphatase 1 Rabbit Monoclonal Antibody - Product Information**

Application	WB, IP
Primary Accession	<a href="#">Q15181</a>
Host	Rabbit
Isotype	IgG
Reactivity	Rat, Human, Mouse
Clonality	Monoclonal
Format	Liquid

**Description**

Anti-Pyrophosphatase 1 Rabbit Monoclonal Antibody . Tested in WB, IP applications. This antibody reacts with Human, Mouse, Rat.

**Anti-Pyrophosphatase 1 Rabbit Monoclonal Antibody - Additional Information**

**Gene ID** 5464

**Other Names**

Inorganic pyrophosphatase, 3.6.1.1, Pyrophosphate phospho-hydrolase, PPase, PPA1, IOPPP, PP

**Calculated MW**

33 kDa KDa

**Application Details**

WB 1:500-1:2000<br>IP 1:50

**Contents**

Rabbit IgG in phosphate buffered saline, pH 7.4, 150mM NaCl, 0.02% sodium azide and 50% glycerol, 0.4-0.5mg/ml BSA.

**Immunogen**

A synthesized peptide derived from human Pyrophosphatase 1

**Purification**

Affinity-chromatography

**Storage**

**Store at -20°C for one year. For short term storage and frequent use, store at 4°C for up to one month. Avoid repeated freeze-thaw cycles.**

**Anti-Pyrophosphatase 1 Rabbit Monoclonal Antibody - Protein Information**

**Name** PPA1

**Synonyms** IOPPP, PP

**Cellular Location**

Cytoplasm.

**Tissue Location**

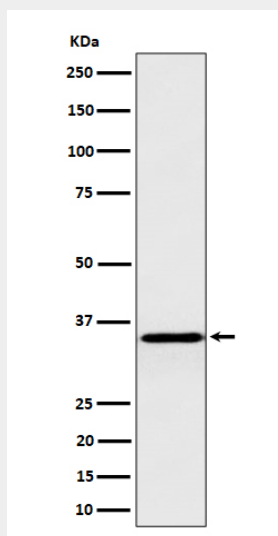
Expressed ubiquitously.

**Anti-Pyrophosphatase 1 Rabbit Monoclonal Antibody - Protocols**

Provided below are standard protocols that you may find useful for product applications.

- [Western Blot](#)
- [Blocking Peptides](#)
- [Dot Blot](#)
- [Immunohistochemistry](#)
- [Immunofluorescence](#)
- [Immunoprecipitation](#)
- [Flow Cytometry](#)
- [Cell Culture](#)

**Anti-Pyrophosphatase 1 Rabbit Monoclonal Antibody - Images**



Western blot analysis of Pyrophosphatase 1 expression in HepG2 cell lysate.