

Anti-Nup107 Rabbit Monoclonal Antibody
Catalog # ABO16432**Specification**

Anti-Nup107 Rabbit Monoclonal Antibody - Product Information

Application	WB
Primary Accession	P57740
Host	Rabbit
Isotype	IgG
Reactivity	Human
Clonality	Monoclonal
Format	Liquid

Description

Anti-Nup107 Rabbit Monoclonal Antibody . Tested in WB application. This antibody reacts with Human.

Anti-Nup107 Rabbit Monoclonal Antibody - Additional Information

Gene ID 57122

Other Names

Nuclear pore complex protein Nup107, 107 kDa nucleoporin, Nucleoporin Nup107, NUP107

Calculated MW

106 kDa KDa

Application Details

WB 1:500-1:2000

Contents

Rabbit IgG in phosphate buffered saline, pH 7.4, 150mM NaCl, 0.02% sodium azide and 50% glycerol, 0.4-0.5mg/ml BSA.

Immunogen

A synthesized peptide derived from human Nup107

Purification

Affinity-chromatography

Storage

Store at -20°C for one year. For short term storage and frequent use, store at 4°C for up to one month. Avoid repeated freeze-thaw cycles.

Anti-Nup107 Rabbit Monoclonal Antibody - Protein Information

Name NUP107

Function

Plays a role in the nuclear pore complex (NPC) assembly and/or maintenance (PubMed:12552102, PubMed:15229283, PubMed:30179222). Required for the assembly of peripheral proteins into the NPC (PubMed:12552102, PubMed:15229283). May anchor NUP62 to the NPC (PubMed:15229283). Involved in nephrogenesis (PubMed:30179222).

Cellular Location

Nucleus membrane. Nucleus, nuclear pore complex. Chromosome, centromere, kinetochore. Note=Located on both the cytoplasmic and nuclear sides of the NPC core structure (PubMed:11564755). During mitosis, localizes to the kinetochores (PubMed:11564755). Dissociates from the disassembled NPC structure late during prophase of mitosis (PubMed:11564755)

Tissue Location

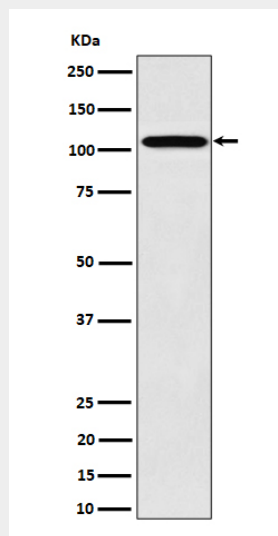
Ubiquitously expressed in fetal and adult tissues.

Anti-Nup107 Rabbit Monoclonal Antibody - Protocols

Provided below are standard protocols that you may find useful for product applications.

- [Western Blot](#)
- [Blocking Peptides](#)
- [Dot Blot](#)
- [Immunohistochemistry](#)
- [Immunofluorescence](#)
- [Immunoprecipitation](#)
- [Flow Cytometry](#)
- [Cell Culture](#)

Anti-Nup107 Rabbit Monoclonal Antibody - Images



Western blot analysis of Nup107 expression in 293 cell lysate.