

Anti-PREB Rabbit Monoclonal Antibody
Catalog # ABO16435**Specification****Anti-PREB Rabbit Monoclonal Antibody - Product Information**

Application	WB, IHC, IF, ICC
Primary Accession	Q9HCU5
Host	Rabbit
Isotype	IgG
Reactivity	Human
Clonality	Monoclonal
Format	Liquid

Description

Anti-PREB Rabbit Monoclonal Antibody . Tested in WB, IHC, ICC/IF applications. This antibody reacts with Human.

Anti-PREB Rabbit Monoclonal Antibody - Additional Information

Gene ID 10113

Other Names

Guanine nucleotide-exchange factor SEC12, Prolactin regulatory element-binding protein, PREB {ECO:0000303|PubMed:10920239, ECO:0000312|HGNC:HGNC:9356}

Calculated MW

45 kDa KDa

Application Details

WB 1:500-1:2000
IHC 1:50-1:200
ICC/IF 1:50-1:200

Contents

Rabbit IgG in phosphate buffered saline, pH 7.4, 150mM NaCl, 0.02% sodium azide and 50% glycerol, 0.4-0.5mg/ml BSA.

Immunogen

A synthesized peptide derived from human PREB

Purification

Affinity-chromatography

Storage

Store at -20°C for one year. For short term storage and frequent use, store at 4°C for up to one month. Avoid repeated freeze-thaw cycles.

Anti-PREB Rabbit Monoclonal Antibody - Protein Information

Name PREB {ECO:0000303|PubMed:10920239, ECO:0000312|HGNC:HGNC:9356}

Function

Guanine nucleotide exchange factor (GEF) that regulates the assembly of the coat protein complex II/COPII in endoplasmic reticulum (ER) to Golgi vesicle-mediated transport. Selectively activates SAR1A and SAR1B by promoting the exchange of guanosine diphosphate (GDP) for guanosine triphosphate (GTP) in these small GTPases (PubMed:32358066). In their activated GTP-bound state, SAR1A and SAR1B insert into the membrane of the endoplasmic reticulum where they recruit the remainder of the coat protein complex II/COPII which is responsible for both the sorting of proteins and the deformation and budding of membranes into vesicles destined to the Golgi (PubMed:32358066).

Cellular Location

Endoplasmic reticulum membrane {ECO:0000250|UniProtKB:Q9WTV0}; Single-pass membrane protein {ECO:0000250|UniProtKB:Q9WTV0}. Nucleus {ECO:0000250|UniProtKB:Q9WTV0} Note=Concentrates at endoplasmic reticulum exit sites (ERES), also known as transitional endoplasmic reticulum (tER)

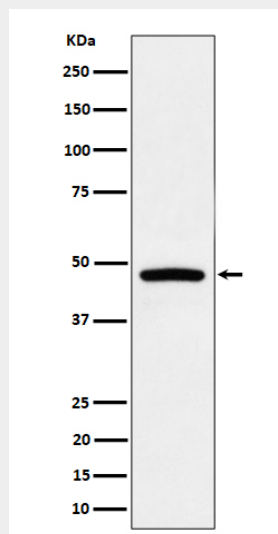
Tissue Location

Ubiquitous.

Anti-PREB Rabbit Monoclonal Antibody - Protocols

Provided below are standard protocols that you may find useful for product applications.

- [Western Blot](#)
- [Blocking Peptides](#)
- [Dot Blot](#)
- [Immunohistochemistry](#)
- [Immunofluorescence](#)
- [Immunoprecipitation](#)
- [Flow Cytometry](#)
- [Cell Culture](#)

Anti-PREB Rabbit Monoclonal Antibody - Images

Western blot analysis of PREB expression in Raji cell lysate.