

**Anti-PPM1G Rabbit Monoclonal Antibody**  
**Catalog # ABO16437****Specification**

---

**Anti-PPM1G Rabbit Monoclonal Antibody - Product Information**

Application	WB
Primary Accession	<a href="#">O15355</a>
Host	Rabbit
Isotype	IgG
Reactivity	Rat, Human, Mouse
Clonality	Monoclonal
Format	Liquid

**Description**

Anti-PPM1G Rabbit Monoclonal Antibody . Tested in WB application. This antibody reacts with Human, Mouse, Rat.

**Anti-PPM1G Rabbit Monoclonal Antibody - Additional Information**

**Gene ID** 5496

**Other Names**

Protein phosphatase 1G, 3.1.3.16, Protein phosphatase 1C, Protein phosphatase 2C isoform gamma, PP2C-gamma, Protein phosphatase magnesium-dependent 1 gamma, PPM1G, PPM1C

**Calculated MW**

75 kDa KDa

**Application Details**

WB 1:500-1:2000

**Contents**

Rabbit IgG in phosphate buffered saline, pH 7.4, 150mM NaCl, 0.02% sodium azide and 50% glycerol, 0.4-0.5mg/ml BSA.

**Immunogen**

A synthesized peptide derived from human PPM1G

**Purification**

Affinity-chromatography

**Storage**

**Store at -20°C for one year. For short term storage and frequent use, store at 4°C for up to one month. Avoid repeated freeze-thaw cycles.**

**Anti-PPM1G Rabbit Monoclonal Antibody - Protein Information**

**Name** PPM1G

**Synonyms** PPM1C**Cellular Location**

Cytoplasm. Membrane; Lipid-anchor

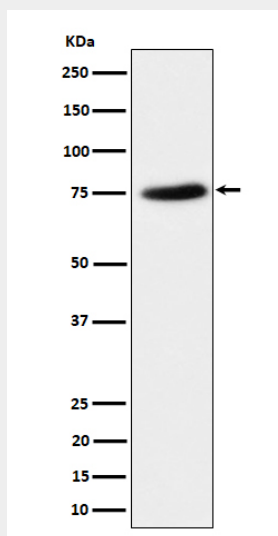
**Tissue Location**

Widely expressed. Most abundant in testis, skeletal muscle, and heart

**Anti-PPM1G Rabbit Monoclonal Antibody - Protocols**

Provided below are standard protocols that you may find useful for product applications.

- [Western Blot](#)
- [Blocking Peptides](#)
- [Dot Blot](#)
- [Immunohistochemistry](#)
- [Immunofluorescence](#)
- [Immunoprecipitation](#)
- [Flow Cytometry](#)
- [Cell Culture](#)

**Anti-PPM1G Rabbit Monoclonal Antibody - Images**

Western blot analysis of PPM1G expression in HeLa cell lysate.