

Anti-TEMT Rabbit Monoclonal Antibody
Catalog # ABO16440**Specification**

Anti-TEMT Rabbit Monoclonal Antibody - Product Information

Application	WB
Primary Accession	O95050
Host	Rabbit
Isotype	IgG
Reactivity	Rat, Human, Mouse
Clonality	Monoclonal
Format	Liquid

Description

Anti-TEMT Rabbit Monoclonal Antibody . Tested in WB application. This antibody reacts with Human, Mouse, Rat.

Anti-TEMT Rabbit Monoclonal Antibody - Additional Information

Gene ID 11185

Other Names

Indolethylamine N-methyltransferase, Indolamine N-methyltransferase, 2.1.1.49, 2.1.1.96, Aromatic alkylamine N-methyltransferase, Amine N-methyltransferase, Arylamine N-methyltransferase, Thioether S-methyltransferase, TEMT, INMT

Calculated MW

25 kDa KDa

Application Details

WB 1:500-1:2000

Contents

Rabbit IgG in phosphate buffered saline, pH 7.4, 150mM NaCl, 0.02% sodium azide and 50% glycerol, 0.4-0.5mg/ml BSA.

Immunogen

A synthesized peptide derived from human TEMT

Purification

Affinity-chromatography

Storage

Store at -20°C for one year. For short term storage and frequent use, store at 4°C for up to one month. Avoid repeated freeze-thaw cycles.

Anti-TEMT Rabbit Monoclonal Antibody - Protein Information

Name INMT**Function**

Functions as a thioether S-methyltransferase and is active with a variety of thioethers and the corresponding selenium and tellurium compounds, including 3-methylthiopropionaldehyde, dimethyl selenide, dimethyl telluride, 2-methylthioethylamine, 2- methylthioethanol, methyl-n-propyl sulfide and diethyl sulfide. Plays an important role in the detoxification of selenium compounds (By similarity). Catalyzes the N-methylation of tryptamine and structurally related compounds.

Cellular Location

Cytoplasm.

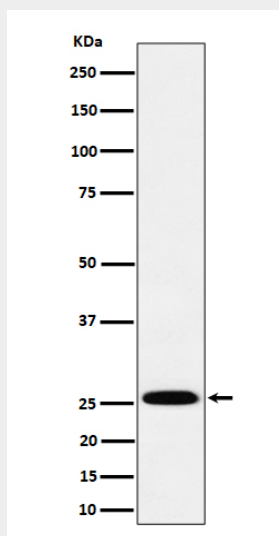
Tissue Location

Widely expressed. The highest levels were in thyroid, adrenal gland, adult and fetal lung. Intermediate levels in heart, placenta, skeletal muscle, testis, small intestine, pancreas, stomach, spinal cord, lymph node and trachea. Very low levels in adult and fetal kidney and liver, in adult spleen, thymus, ovary, colon and bone marrow. Not expressed in peripheral blood leukocytes and brain

Anti-TEMT Rabbit Monoclonal Antibody - Protocols

Provided below are standard protocols that you may find useful for product applications.

- [Western Blot](#)
- [Blocking Peptides](#)
- [Dot Blot](#)
- [Immunohistochemistry](#)
- [Immunofluorescence](#)
- [Immunoprecipitation](#)
- [Flow Cytometry](#)
- [Cell Culture](#)

Anti-TEMT Rabbit Monoclonal Antibody - Images

Western blot analysis of TEMT expression in A549 cell lysate.