

Anti-FPGS Rabbit Monoclonal Antibody
Catalog # ABO16454**Specification**

Anti-FPGS Rabbit Monoclonal Antibody - Product Information

Application	WB
Primary Accession	Q05932
Host	Rabbit
Isotype	IgG
Reactivity	Rat, Human, Mouse
Clonality	Monoclonal
Format	Liquid

Description

Anti-FPGS Rabbit Monoclonal Antibody . Tested in WB application. This antibody reacts with Human, Mouse, Rat.

Anti-FPGS Rabbit Monoclonal Antibody - Additional Information

Gene ID 2356

Other Names

Folylpolyglutamate synthase, mitochondrial, 6.3.2.17, Folylpoly-gamma-glutamate synthetase, FPGS, Tetrahydrofolylpolyglutamate synthase, Tetrahydrofolate synthase, FPGS

Calculated MW

60 kDa KDa

Application Details

WB 1:500-1:2000

Contents

Rabbit IgG in phosphate buffered saline, pH 7.4, 150mM NaCl, 0.02% sodium azide and 50% glycerol, 0.4-0.5mg/ml BSA.

Immunogen

A synthesized peptide derived from human FPGS

Purification

Affinity-chromatography

Storage

Store at -20°C for one year. For short term storage and frequent use, store at 4°C for up to one month. Avoid repeated freeze-thaw cycles.

Anti-FPGS Rabbit Monoclonal Antibody - Protein Information

Name FPGS

Function

Catalyzes conversion of folates to polyglutamate derivatives allowing concentration of folate compounds in the cell and the intracellular retention of these cofactors, which are important substrates for most of the folate-dependent enzymes that are involved in one-carbon transfer reactions involved in purine, pyrimidine and amino acid synthesis. Unsubstituted reduced folates are the preferred substrates. Metabolizes methotrexate (MTX) to polyglutamates.

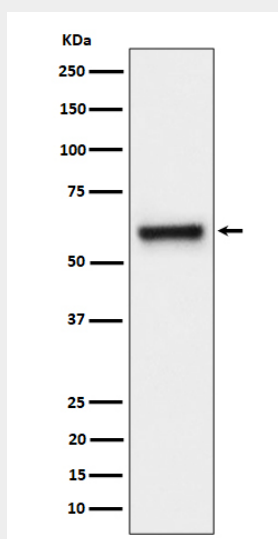
Cellular Location

[Isoform 1]: Mitochondrion inner membrane. Mitochondrion matrix

Anti-FPGS Rabbit Monoclonal Antibody - Protocols

Provided below are standard protocols that you may find useful for product applications.

- [Western Blot](#)
- [Blocking Peptides](#)
- [Dot Blot](#)
- [Immunohistochemistry](#)
- [Immunofluorescence](#)
- [Immunoprecipitation](#)
- [Flow Cytometry](#)
- [Cell Culture](#)

Anti-FPGS Rabbit Monoclonal Antibody - Images

Western blot analysis of FPGS expression in HeLa cell lysate.