

Anti-IFT88 Rabbit Monoclonal Antibody
Catalog # ABO16456

Specification

Anti-IFT88 Rabbit Monoclonal Antibody - Product Information

Application	WB
Primary Accession	Q13099
Host	Rabbit
Isotype	IgG
Reactivity	Rat, Human, Mouse
Clonality	Monoclonal
Format	Liquid

Description

Anti-IFT88 Rabbit Monoclonal Antibody . Tested in WB application. This antibody reacts with Human, Mouse, Rat.

Anti-IFT88 Rabbit Monoclonal Antibody - Additional Information

Gene ID 8100

Other Names

Intraflagellar transport protein 88 homolog, Recessive polycystic kidney disease protein Tg737 homolog, Tetratricopeptide repeat protein 10, TPR repeat protein 10, IFT88, TG737, TTC10

Calculated MW

94 kDa KDa

Application Details

WB 1:500-1:2000

Contents

Rabbit IgG in phosphate buffered saline, pH 7.4, 150mM NaCl, 0.02% sodium azide and 50% glycerol, 0.4-0.5mg/ml BSA.

Immunogen

A synthesized peptide derived from human IFT88

Purification

Affinity-chromatography

Storage

Store at -20°C for one year. For short term storage and frequent use, store at 4°C for up to one month. Avoid repeated freeze-thaw cycles.

Anti-IFT88 Rabbit Monoclonal Antibody - Protein Information

Name IFT88

Synonyms TG737, TTC10

Function

Positively regulates primary cilium biogenesis (PubMed:17604723). Also involved in autophagy since it is required for trafficking of ATG16L and the expansion of the autophagic compartment.

Cellular Location

Cytoplasm, cytoskeleton, microtubule organizing center, centrosome, centriole {ECO:0000250|UniProtKB:Q61371}. Cell projection, cilium. Cytoplasm, cytoskeleton, cilium basal body. Cytoplasm, cytoskeleton, microtubule organizing center, centrosome. Cytoplasm {ECO:0000250|UniProtKB:Q61371}. Cell projection, cilium, flagellum {ECO:0000250|UniProtKB:Q61371}. Cytoplasm, cytoskeleton {ECO:0000250|UniProtKB:Q61371}. Note=Colocalizes with ENTR1 and gamma- tubulin at the basal body of primary cilia (PubMed:27767179) Colocalizes with ENTR1 and pericentrin at the centrosome (PubMed:27767179). In sperm cells, localizes to the manchette, head- tail coupling apparatus and flagellum (By similarity) {ECO:0000250|UniProtKB:Q61371, ECO:0000269|PubMed:27767179}

Tissue Location

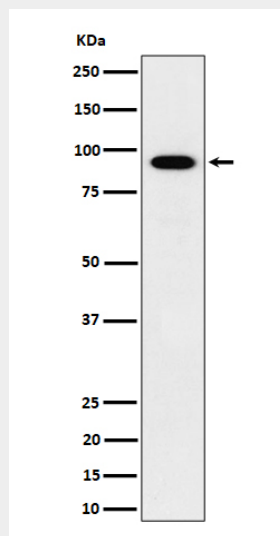
Expressed in the heart, brain, liver, lung, kidney, skeletal muscle and pancreas.

Anti-IFT88 Rabbit Monoclonal Antibody - Protocols

Provided below are standard protocols that you may find useful for product applications.

- [Western Blot](#)
- [Blocking Peptides](#)
- [Dot Blot](#)
- [Immunohistochemistry](#)
- [Immunofluorescence](#)
- [Immunoprecipitation](#)
- [Flow Cytometry](#)
- [Cell Culture](#)

Anti-IFT88 Rabbit Monoclonal Antibody - Images



Western blot analysis of IFT88 expression in HepG2 cell lysate.