

Anti-UFD1L Rabbit Monoclonal Antibody
Catalog # ABO16459**Specification****Anti-UFD1L Rabbit Monoclonal Antibody - Product Information**

Application	WB, IF, ICC, FC
Primary Accession	Q92890
Host	Rabbit
Isotype	IgG
Reactivity	Rat, Human, Mouse
Clonality	Monoclonal
Format	Liquid

Description

Anti-UFD1L Rabbit Monoclonal Antibody . Tested in WB, ICC/IF, Flow Cytometry applications. This antibody reacts with Human, Mouse, Rat.

Anti-UFD1L Rabbit Monoclonal Antibody - Additional Information

Gene ID 7353

Other Names

Ubiquitin recognition factor in ER-associated degradation protein 1
{ECO:0000312|HGNC:HGNC:12520}, Ubiquitin fusion degradation protein 1, UB fusion protein 1, UFD1 (http://www.genenames.org/cgi-bin/gene_symbol_report?hgnc_id=12520), UFD1L

Calculated MW

35 kDa, 40 kDa KDa

Application Details

WB 1:500-1:2000
ICC/IF 1:50-1:200
FC 1:50

Contents

Rabbit IgG in phosphate buffered saline, pH 7.4, 150mM NaCl, 0.02% sodium azide and 50% glycerol, 0.4-0.5mg/ml BSA.

Immunogen

A synthesized peptide derived from human UFD1L

Purification

Affinity-chromatography

Storage

Store at -20°C for one year. For short term storage and frequent use, store at 4°C for up to one month. Avoid repeated freeze-thaw cycles.

Anti-UFD1L Rabbit Monoclonal Antibody - Protein Information

Name UFD1 ([HGNC:12520](#))

Synonyms UFD1L

Function

Essential component of the ubiquitin-dependent proteolytic pathway which degrades ubiquitin fusion proteins. The ternary complex containing UFD1, VCP and NPLOC4 binds ubiquitinated proteins and is necessary for the export of misfolded proteins from the ER to the cytoplasm, where they are degraded by the proteasome. The NPLOC4-UFD1- VCP complex regulates spindle disassembly at the end of mitosis and is necessary for the formation of a closed nuclear envelope. It may be involved in the development of some ectoderm-derived structures (By similarity). Acts as a negative regulator of type I interferon production via the complex formed with VCP and NPLOC4, which binds to RIGI and recruits RNF125 to promote ubiquitination and degradation of RIGI (PubMed: <http://www.uniprot.org/citations/26471729>).

Cellular Location

Nucleus {ECO:0000250|UniProtKB:Q9ES53}. Cytoplasm, cytosol {ECO:0000250|UniProtKB:Q9ES53}

Tissue Location

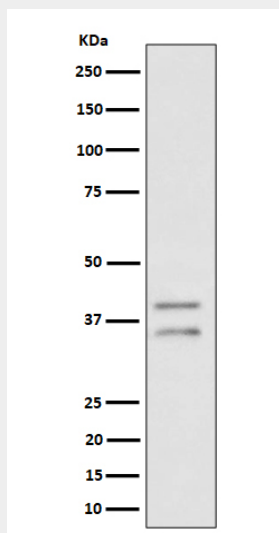
Found in adult heart, skeletal muscle and pancreas, and in fetal liver and kidney

Anti-UFD1L Rabbit Monoclonal Antibody - Protocols

Provided below are standard protocols that you may find useful for product applications.

- [Western Blot](#)
- [Blocking Peptides](#)
- [Dot Blot](#)
- [Immunohistochemistry](#)
- [Immunofluorescence](#)
- [Immunoprecipitation](#)
- [Flow Cytometry](#)
- [Cell Culture](#)

Anti-UFD1L Rabbit Monoclonal Antibody - Images



Western blot analysis of UFD1L expression in HeLa cell lysate.