

Anti-PTPRR Rabbit Monoclonal Antibody
Catalog # ABO16463**Specification**

Anti-PTPRR Rabbit Monoclonal Antibody - Product Information

Application	WB, IHC
Primary Accession	Q15256
Host	Rabbit
Isotype	IgG
Reactivity	Rat, Human, Mouse
Clonality	Monoclonal
Format	Liquid

Description

Anti-PTPRR Rabbit Monoclonal Antibody . Tested in WB, IHC applications. This antibody reacts with Human, Mouse, Rat.

Anti-PTPRR Rabbit Monoclonal Antibody - Additional Information

Gene ID 5801

Other Names

Receptor-type tyrosine-protein phosphatase R, R-PTP-R, 3.1.3.48, Ch-1PTPase, NC-PTPCOM1, Protein-tyrosine phosphatase PCPTP1, PTPRR, ECPTP, PTPRQ

Calculated MW

74 kDa KDa

Application Details

WB 1:500-1:2000
IHC 1:50-1:200

Contents

Rabbit IgG in phosphate buffered saline, pH 7.4, 150mM NaCl, 0.02% sodium azide and 50% glycerol, 0.4-0.5mg/ml BSA.

Immunogen

A synthesized peptide derived from human PTPRR

Purification

Affinity-chromatography

Storage

Store at -20°C for one year. For short term storage and frequent use, store at 4°C for up to one month. Avoid repeated freeze-thaw cycles.

Anti-PTPRR Rabbit Monoclonal Antibody - Protein Information

Name PTPRR

Synonyms ECPTP, PTPRQ

Function

Sequesters mitogen-activated protein kinases (MAPKs) such as MAPK1, MAPK3 and MAPK14 in the cytoplasm in an inactive form. The MAPKs bind to a dephosphorylated kinase interacting motif, phosphorylation of which by the protein kinase A complex releases the MAPKs for activation and translocation into the nucleus (By similarity).

Cellular Location

Secreted. [Isoform Delta]: Cytoplasm, perinuclear region. Note=Locates to the perinuclear areas within the cytoplasm

Tissue Location

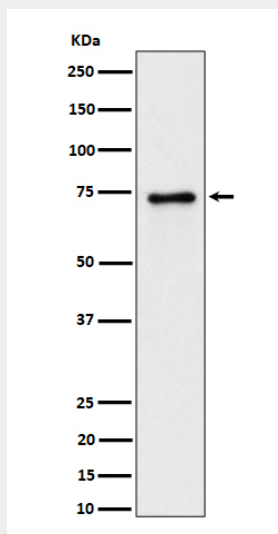
Detected in cerebrospinal fluid (at protein level) (PubMed:25326458). Expressed in brain, placenta, small intestine, stomach, uterus and weakly in the prostate. Isoform alpha has been observed only in the brain. Isoform gamma is expressed in brain, placenta and uterus. Isoform delta is expressed in brain, kidney, placenta, prostate, small intestine and uterus

Anti-PTPRR Rabbit Monoclonal Antibody - Protocols

Provided below are standard protocols that you may find useful for product applications.

- [Western Blot](#)
- [Blocking Peptides](#)
- [Dot Blot](#)
- [Immunohistochemistry](#)
- [Immunofluorescence](#)
- [Immunoprecipitation](#)
- [Flow Cytometry](#)
- [Cell Culture](#)

Anti-PTPRR Rabbit Monoclonal Antibody - Images



Western blot analysis of PTPRR expression in mouse brain lysate.