

Anti-MLD Rabbit Monoclonal Antibody
Catalog # ABO16467**Specification****Anti-MLD Rabbit Monoclonal Antibody - Product Information**

Application	WB
Primary Accession	O15121
Host	Rabbit
Isotype	IgG
Reactivity	Human
Clonality	Monoclonal
Format	Liquid

Description

Anti-MLD Rabbit Monoclonal Antibody . Tested in WB application. This antibody reacts with Human.

Anti-MLD Rabbit Monoclonal Antibody - Additional Information

Gene ID 8560

Other Names

Sphingolipid delta(4)-desaturase DES1, 1.14.19.17, Cell migration-inducing gene 15 protein, Degenerative spermatocyte homolog 1, Dihydroceramide desaturase-1, Membrane lipid desaturase, Retinol isomerase, 5.2.1.-, DEGS1 (http://www.genenames.org/cgi-bin/gene_symbol_report?hgnc_id=13709)>HGNC:13709), DES1, MLD

Calculated MW

34 kDa KDa

Application Details

WB 1:500-1:2000

Contents

Rabbit IgG in phosphate buffered saline, pH 7.4, 150mM NaCl, 0.02% sodium azide and 50% glycerol, 0.4-0.5mg/ml BSA.

Immunogen

A synthesized peptide derived from human MLD

Purification

Affinity-chromatography

Storage

Store at -20°C for one year. For short term storage and frequent use, store at 4°C for up to one month. Avoid repeated freeze-thaw cycles.

Anti-MLD Rabbit Monoclonal Antibody - Protein Information

Name DEGS1 ([HGNC:13709](#))

Synonyms DES1, MLD

Function

Has sphingolipid-delta-4-desaturase activity. Converts D- erythro-sphinganine to D-erythro-sphingosine (E-sphing-4-enine) (PubMed:11937514, PubMed:30620337, PubMed:30620338). Catalyzes the equilibrium isomerization of retinols (By similarity).

Cellular Location

Mitochondrion membrane. Endoplasmic reticulum membrane; Multi-pass membrane protein

Tissue Location

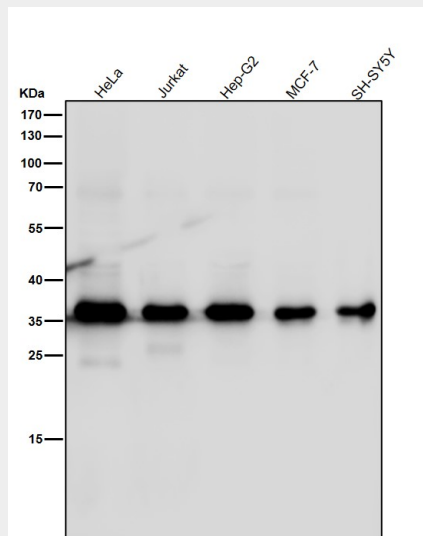
Ubiquitous..

Anti-MLD Rabbit Monoclonal Antibody - Protocols

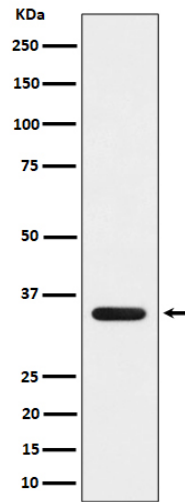
Provided below are standard protocols that you may find useful for product applications.

- [Western Blot](#)
- [Blocking Peptides](#)
- [Dot Blot](#)
- [Immunohistochemistry](#)
- [Immunofluorescence](#)
- [Immunoprecipitation](#)
- [Flow Cytometry](#)
- [Cell Culture](#)

Anti-MLD Rabbit Monoclonal Antibody - Images



All lanes use the Antibody at 1:3K dilution for 1 hour at room temperature.



Western blot analysis of MLD expression in 293 cell lysate.