

Anti-Phospho-p130(T986) Rabbit Monoclonal Antibody
Catalog # ABO16474**Specification****Anti-Phospho-p130(T986) Rabbit Monoclonal Antibody - Product Information**

Application	WB, IP
Primary Accession	Q08999
Host	Rabbit
Isotype	IgG
Reactivity	Human, Mouse
Clonality	Monoclonal
Format	Liquid

Description

Anti-Phospho-p130(T986) Rabbit Monoclonal Antibody . Tested in WB, IP applications. This antibody reacts with Human, Mouse.

Anti-Phospho-p130(T986) Rabbit Monoclonal Antibody - Additional Information

Gene ID 5934

Other Names

Retinoblastoma-like protein 2, 130 kDa retinoblastoma-associated protein, p130, Retinoblastoma-related protein 2, RBR-2, pRb2, RBL2, RB2

Calculated MW

128 kDa KDa

Application Details

WB 1:500-1:2000
IP 1:50

Contents

Rabbit IgG in phosphate buffered saline, pH 7.4, 150mM NaCl, 0.02% sodium azide and 50% glycerol, 0.4-0.5mg/ml BSA.

Immunogen

A synthesized peptide derived from human Phospho-p130(T986)

Purification

Affinity-chromatography

Storage

Store at -20°C for one year. For short term storage and frequent use, store at 4°C for up to one month. Avoid repeated freeze-thaw cycles.

Anti-Phospho-p130(T986) Rabbit Monoclonal Antibody - Protein Information

Name RBL2

Synonyms RB2

Function

Key regulator of entry into cell division. Directly involved in heterochromatin formation by maintaining overall chromatin structure and, in particular, that of constitutive heterochromatin by stabilizing histone methylation. Recruits and targets histone methyltransferases KMT5B and KMT5C, leading to epigenetic transcriptional repression. Controls histone H4 'Lys-20' trimethylation. Probably acts as a transcription repressor by recruiting chromatin-modifying enzymes to promoters. Potent inhibitor of E2F-mediated trans-activation, associates preferentially with E2F5. Binds to cyclins A and E. Binds to and may be involved in the transforming capacity of the adenovirus E1A protein. May act as a tumor suppressor.

Cellular Location

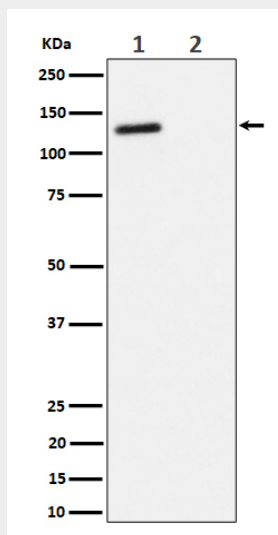
Nucleus.

Anti-Phospho-p130(T986) Rabbit Monoclonal Antibody - Protocols

Provided below are standard protocols that you may find useful for product applications.

- [Western Blot](#)
- [Blocking Peptides](#)
- [Dot Blot](#)
- [Immunohistochemistry](#)
- [Immunofluorescence](#)
- [Immunoprecipitation](#)
- [Flow Cytometry](#)
- [Cell Culture](#)

Anti-Phospho-p130(T986) Rabbit Monoclonal Antibody - Images



Western blot analysis of Phospho-p130(T986) expression in (1) Jurkat cell lysate; (2) Jurkat cell treated with phosphatase lysate.