

Anti-Septin 8 Rabbit Monoclonal Antibody
Catalog # ABO16478**Specification**

Anti-Septin 8 Rabbit Monoclonal Antibody - Product Information

Application	WB, IHC, IF, ICC, IP, FC
Primary Accession	Q92599
Host	Rabbit
Isotype	IgG
Reactivity	Rat, Human, Mouse
Clonality	Monoclonal
Format	Liquid

Description

Anti-Septin 8 Rabbit Monoclonal Antibody . Tested in WB, IHC, ICC/IF, IP, Flow Cytometry applications. This antibody reacts with Human, Mouse, Rat.

Anti-Septin 8 Rabbit Monoclonal Antibody - Additional Information

Gene ID 23176

Other Names

Septin-8, SEPTIN8 (http://www.genenames.org/cgi-bin/gene_symbol_report?hgnc_id=16511)
HGNC:16511

Calculated MW

50 kDa KDa

Application Details

WB 1:500-1:2000
IHC 1:50-1:200
ICC/IF 1:50-1:200
IP 1:50
FC 1:50

Contents

Rabbit IgG in phosphate buffered saline, pH 7.4, 150mM NaCl, 0.02% sodium azide and 50% glycerol, 0.4-0.5mg/ml BSA.

Immunogen

A synthesized peptide derived from human Septin 8

Purification

Affinity-chromatography

Storage

Store at -20°C for one year. For short term storage and frequent use, store at 4°C for up to one month. Avoid repeated freeze-thaw cycles.

Anti-Septin 8 Rabbit Monoclonal Antibody - Protein Information

Name SEPTIN8 ([HGNC:16511](#))

Function

Filament-forming cytoskeletal GTPase (By similarity). May play a role in platelet secretion (PubMed:15116257). Seems to participate in the process of SNARE complex formation in synaptic vesicles (By similarity).

Cellular Location

Cytoplasm {ECO:0000250|UniProtKB:B0BNF1}. Cytoplasm, cytoskeleton. Synapse {ECO:0000250|UniProtKB:B0BNF1}. Cell projection, axon {ECO:0000250|UniProtKB:B0BNF1}. Cytoplasmic vesicle, secretory vesicle, synaptic vesicle membrane {ECO:0000250|UniProtKB:B0BNF1}. Presynapse {ECO:0000250|UniProtKB:B0BNF1}. Note=Expressed in axons of immature neurons, localizes to synapses in mature neurons (By similarity). In platelets, found in areas surrounding alpha-granules (PubMed:15116257) {ECO:0000250|UniProtKB:B0BNF1, ECO:0000269|PubMed:15116257}

Tissue Location

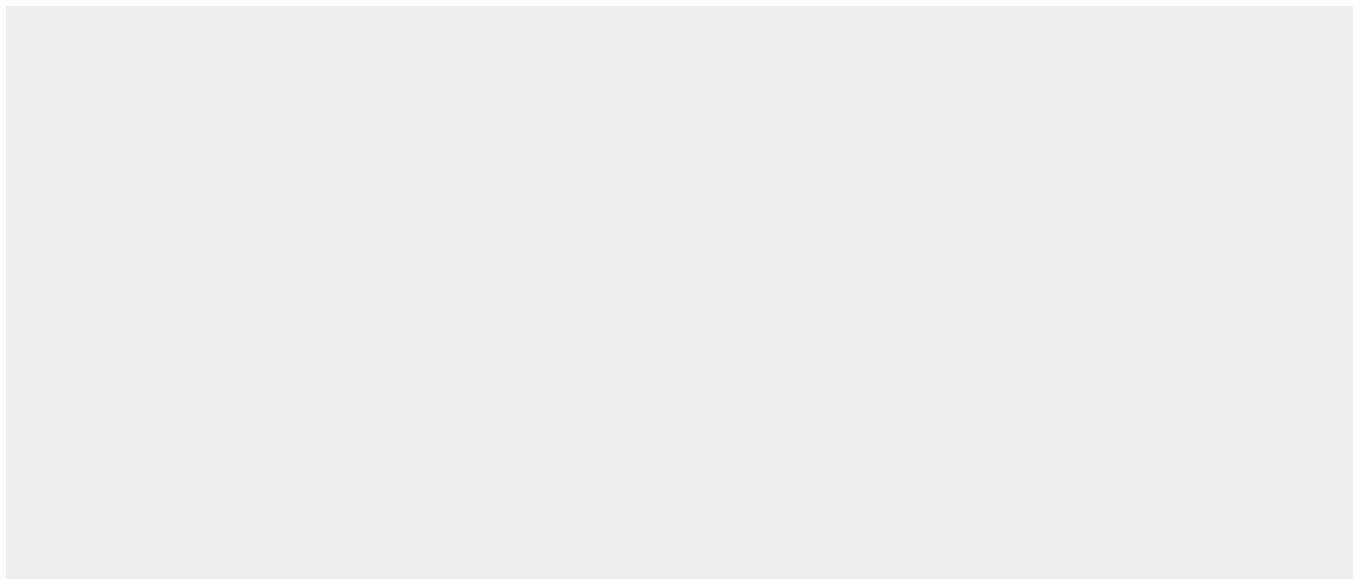
Widely expressed, including in brain, heart and platelets; most abundant in aorta. Isoform 2 is expressed at low levels in specific brain areas, such as occipital pole, frontal lobe, temporal lobe and putamen. Isoform 1 and 3 are highly expressed in specific brain areas, such as occipital pole, frontal lobe, temporal lobe and putamen. Isoform 2 is highly expressed in prostate, testis and ovary Isoform 1 and isoform 3 are expressed at low levels in prostate, testis and ovary.

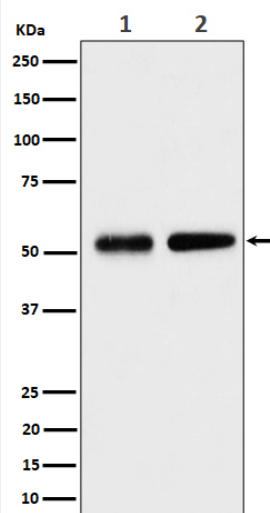
Anti-Septin 8 Rabbit Monoclonal Antibody - Protocols

Provided below are standard protocols that you may find useful for product applications.

- [Western Blot](#)
- [Blocking Peptides](#)
- [Dot Blot](#)
- [Immunohistochemistry](#)
- [Immunofluorescence](#)
- [Immunoprecipitation](#)
- [Flow Cytometry](#)
- [Cell Culture](#)

Anti-Septin 8 Rabbit Monoclonal Antibody - Images





Western blot analysis of Septin 8 expression in (1) HeLa cell lysate; (2) NIH/3T3 cell lysate.