

Anti-MK3 Rabbit Monoclonal Antibody
Catalog # ABO16479**Specification**

Anti-MK3 Rabbit Monoclonal Antibody - Product Information

Application	WB, IP
Primary Accession	Q16644
Host	Rabbit
Isotype	IgG
Reactivity	Human
Clonality	Monoclonal
Format	Liquid

Description

Anti-MK3 Rabbit Monoclonal Antibody . Tested in WB, IP applications. This antibody reacts with Human.

Anti-MK3 Rabbit Monoclonal Antibody - Additional Information

Gene ID 7867

Other Names

MAP kinase-activated protein kinase 3, MAPK-activated protein kinase 3, MAPKAP kinase 3, MAPKAP-K3, MAPKAPK-3, MK-3, 2.7.11.1, Chromosome 3p kinase, 3pK, MAPKAPK3

Calculated MW

43 kDa KDa

Application Details

WB 1:500-1:2000
IP 1:50

Contents

Rabbit IgG in phosphate buffered saline, pH 7.4, 150mM NaCl, 0.02% sodium azide and 50% glycerol, 0.4-0.5mg/ml BSA.

Immunogen

A synthesized peptide derived from human MK3

Purification

Affinity-chromatography

Storage

Store at -20°C for one year. For short term storage and frequent use, store at 4°C for up to one month. Avoid repeated freeze-thaw cycles.

Anti-MK3 Rabbit Monoclonal Antibody - Protein Information

Name MAPKAPK3

Function

Stress-activated serine/threonine-protein kinase involved in cytokines production, endocytosis, cell migration, chromatin remodeling and transcriptional regulation. Following stress, it is phosphorylated and activated by MAP kinase p38-alpha/MAPK14, leading to phosphorylation of substrates. Phosphorylates serine in the peptide sequence, Hyd-X-R-X(2)-S, where Hyd is a large hydrophobic residue. MAPKAPK2 and MAPKAPK3, share the same function and substrate specificity, but MAPKAPK3 kinase activity and level in protein expression are lower compared to MAPKAPK2. Phosphorylates HSP27/HSPB1, KRT18, KRT20, RCSD1, RPS6KA3, TAB3 and TTP/ZFP36. Mediates phosphorylation of HSP27/HSPB1 in response to stress, leading to dissociate HSP27/HSPB1 from large small heat-shock protein (sHsps) oligomers and impair their chaperone activities and ability to protect against oxidative stress effectively. Involved in inflammatory response by regulating tumor necrosis factor (TNF) and IL6 production post- transcriptionally: acts by phosphorylating AU-rich elements (AREs)- binding proteins, such as TTP/ZFP36, leading to regulate the stability and translation of TNF and IL6 mRNAs. Phosphorylation of TTP/ZFP36, a major post-transcriptional regulator of TNF, promotes its binding to 14-3-3 proteins and reduces its ARE mRNA affinity leading to inhibition of dependent degradation of ARE-containing transcript. Involved in toll-like receptor signaling pathway (TLR) in dendritic cells: required for acute TLR-induced macropinocytosis by phosphorylating and activating RPS6KA3. Also acts as a modulator of Polycomb-mediated repression.

Cellular Location

Nucleus. Cytoplasm. Note=Predominantly located in the nucleus, when activated it translocates to the cytoplasm

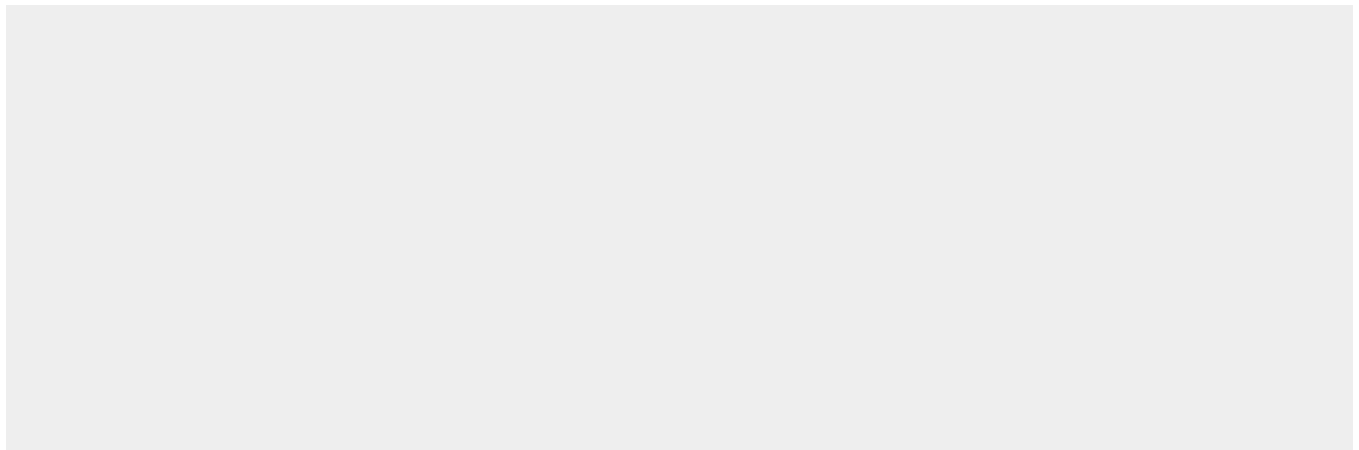
Tissue Location

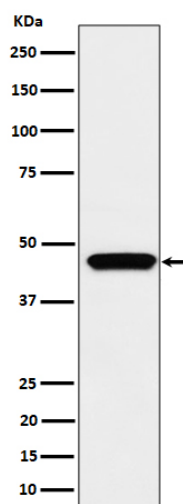
Widely expressed, with a higher expression level observed in heart and skeletal muscle. No expression in brain Expressed in the retinal pigment epithelium (PubMed:26744326)

Anti-MK3 Rabbit Monoclonal Antibody - Protocols

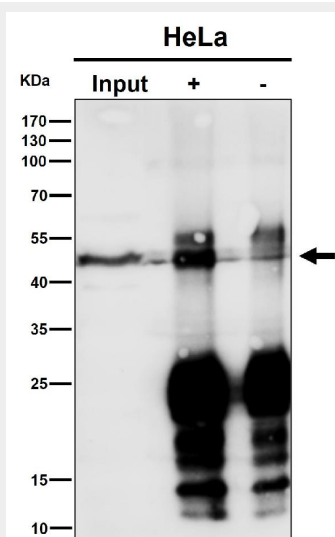
Provided below are standard protocols that you may find useful for product applications.

- [Western Blot](#)
- [Blocking Peptides](#)
- [Dot Blot](#)
- [Immunohistochemistry](#)
- [Immunofluorescence](#)
- [Immunoprecipitation](#)
- [Flow Cytometry](#)
- [Cell Culture](#)

Anti-MK3 Rabbit Monoclonal Antibody - Images



Western blot analysis of MK3 expression in Jurkat cell lysate.



Immunoprecipitate (IP) analysis using the Antibody at 1:50 dilution. (wb at 1:500 dilution)