

Anti-MYO1B Rabbit Monoclonal Antibody
Catalog # ABO16480**Specification**

Anti-MYO1B Rabbit Monoclonal Antibody - Product Information

Application	WB, IHC
Primary Accession	O43795
Host	Rabbit
Isotype	IgG
Reactivity	Rat, Human, Mouse
Clonality	Monoclonal
Format	Liquid

Description

Anti-MYO1B Rabbit Monoclonal Antibody . Tested in WB, IHC applications. This antibody reacts with Human, Mouse, Rat.

Anti-MYO1B Rabbit Monoclonal Antibody - Additional Information

Gene ID 4430

Other Names

Unconventional myosin-Ib, MYH-1c, Myosin I alpha, MMI-alpha, MMIa, MYO1B

Calculated MW

132 kDa KDa

Application Details

WB 1:500-1:2000
IHC 1:50-1:200

Contents

Rabbit IgG in phosphate buffered saline, pH 7.4, 150mM NaCl, 0.02% sodium azide and 50% glycerol, 0.4-0.5mg/ml BSA.

Immunogen

A synthesized peptide derived from human MYO1B

Purification

Affinity-chromatography

Storage

Store at -20°C for one year. For short term storage and frequent use, store at 4°C for up to one month. Avoid repeated freeze-thaw cycles.

Anti-MYO1B Rabbit Monoclonal Antibody - Protein Information

Name MYO1B

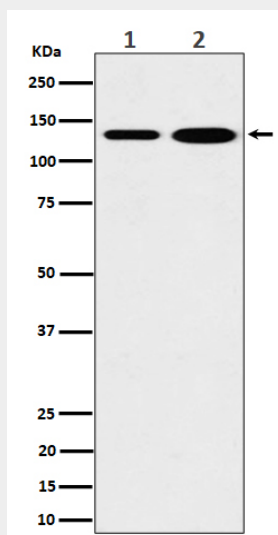
Function

Motor protein that may participate in process critical to neuronal development and function such as cell migration, neurite outgrowth and vesicular transport.

Anti-MYO1B Rabbit Monoclonal Antibody - Protocols

Provided below are standard protocols that you may find useful for product applications.

- [Western Blot](#)
- [Blocking Peptides](#)
- [Dot Blot](#)
- [Immunohistochemistry](#)
- [Immunofluorescence](#)
- [Immunoprecipitation](#)
- [Flow Cytometry](#)
- [Cell Culture](#)

Anti-MYO1B Rabbit Monoclonal Antibody - Images

Western blot analysis of MYO1B expression in (1) 293 cell lysate; (2) Mouse heart lysate.