

Anti-ACAP2 Rabbit Monoclonal Antibody
Catalog # ABO16482

Specification

Anti-ACAP2 Rabbit Monoclonal Antibody - Product Information

| | |
|-------------------|------------------------|
| Application | WB |
| Primary Accession | Q15057 |
| Host | Rabbit |
| Isotype | IgG |
| Reactivity | Rat, Human, Mouse |
| Clonality | Monoclonal |
| Format | Liquid |

Description

Anti-ACAP2 Rabbit Monoclonal Antibody . Tested in WB application. This antibody reacts with Human, Mouse, Rat.

Anti-ACAP2 Rabbit Monoclonal Antibody - Additional Information

Gene ID 23527

Other Names

Arf-GAP with coiled-coil, ANK repeat and PH domain-containing protein 2, Centaurin-beta-2, Cnt-b2, ACAP2, CENTB2, KIAA0041

Calculated MW

88 kDa KDa

Application Details

WB 1:500-1:2000

Contents

Rabbit IgG in phosphate buffered saline, pH 7.4, 150mM NaCl, 0.02% sodium azide and 50% glycerol, 0.4-0.5mg/ml BSA.

Immunogen

A synthesized peptide derived from human ACAP2

Purification

Affinity-chromatography

Storage

Store at -20°C for one year. For short term storage and frequent use, store at 4°C for up to one month. Avoid repeated freeze-thaw cycles.

Anti-ACAP2 Rabbit Monoclonal Antibody - Protein Information

Name ACAP2

Synonyms CENTB2, KIAA0041

Function

GTPase-activating protein (GAP) for ADP ribosylation factor 6 (ARF6). Doesn't show GAP activity for RAB35 (PubMed:30905672).

Cellular Location

Cell membrane. Endosome membrane; Peripheral membrane protein. Note=Colocalizes with RAB35 at the membrane protrusions of HEK293T cells.

Tissue Location

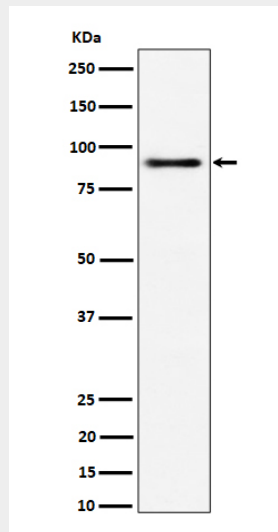
Widely expressed. Highest level in lung.

Anti-ACAP2 Rabbit Monoclonal Antibody - Protocols

Provided below are standard protocols that you may find useful for product applications.

- [Western Blot](#)
- [Blocking Peptides](#)
- [Dot Blot](#)
- [Immunohistochemistry](#)
- [Immunofluorescence](#)
- [Immunoprecipitation](#)
- [Flow Cytometry](#)
- [Cell Culture](#)

Anti-ACAP2 Rabbit Monoclonal Antibody - Images



Western blot analysis of ACAP2 expression in 293 cell lysate.