

Anti-PSMB10 Rabbit Monoclonal Antibody
Catalog # ABO16489**Specification**

Anti-PSMB10 Rabbit Monoclonal Antibody - Product Information

Application	WB, IHC
Primary Accession	P40306
Host	Rabbit
Isotype	IgG
Reactivity	Rat, Human, Mouse
Clonality	Monoclonal
Format	Liquid

Description

Anti-PSMB10 Rabbit Monoclonal Antibody . Tested in WB, IHC applications. This antibody reacts with Human, Mouse, Rat.

Anti-PSMB10 Rabbit Monoclonal Antibody - Additional Information

Gene ID 5699

Other Names

Proteasome subunit beta type-10, 3.4.25.1, Low molecular mass protein 10, Macropain subunit MECL-1, Multicatalytic endopeptidase complex subunit MECL-1, Proteasome MECL-1, Proteasome subunit beta-2i, PSMB10, LMP10, MECL1

Calculated MW

27 kDa KDa

Application Details

WB 1:500-1:2000
IHC 1:50-1:200

Contents

Rabbit IgG in phosphate buffered saline, pH 7.4, 150mM NaCl, 0.02% sodium azide and 50% glycerol, 0.4-0.5mg/ml BSA.

Immunogen

A synthesized peptide derived from human PSMB10

Purification

Affinity-chromatography

Storage

Store at -20°C for one year. For short term storage and frequent use, store at 4°C for up to one month. Avoid repeated freeze-thaw cycles.

Anti-PSMB10 Rabbit Monoclonal Antibody - Protein Information

Name PSMB10

Synonyms LMP10, MECL1

Function

The proteasome is a multicatalytic proteinase complex which is characterized by its ability to cleave peptides with Arg, Phe, Tyr, Leu, and Glu adjacent to the leaving group at neutral or slightly basic pH. The proteasome has an ATP-dependent proteolytic activity. This subunit is involved in antigen processing to generate class I binding peptides.

Cellular Location

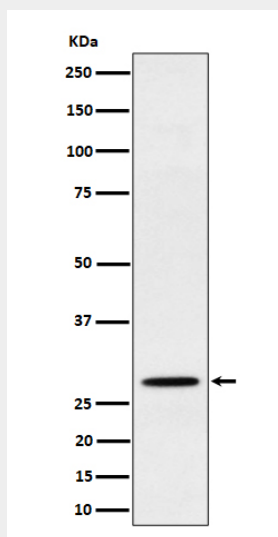
Cytoplasm {ECO:0000255|PROSITE-ProRule:PRU00809}. Nucleus

Anti-PSMB10 Rabbit Monoclonal Antibody - Protocols

Provided below are standard protocols that you may find useful for product applications.

- [Western Blot](#)
- [Blocking Peptides](#)
- [Dot Blot](#)
- [Immunohistochemistry](#)
- [Immunofluorescence](#)
- [Immunoprecipitation](#)
- [Flow Cytometry](#)
- [Cell Culture](#)

Anti-PSMB10 Rabbit Monoclonal Antibody - Images



Western blot analysis of PSMB10 expression in Raji cell lysate.