

Anti-NOLC1 Rabbit Monoclonal Antibody
Catalog # ABO16495**Specification****Anti-NOLC1 Rabbit Monoclonal Antibody - Product Information**

Application	WB, IHC, IF, ICC
Primary Accession	Q14978
Host	Rabbit
Isotype	IgG
Reactivity	Human
Clonality	Monoclonal
Format	Liquid

Description

Anti-NOLC1 Rabbit Monoclonal Antibody . Tested in WB, IHC, ICC/IF applications. This antibody reacts with Human.

Anti-NOLC1 Rabbit Monoclonal Antibody - Additional Information

Gene ID 9221

Other Names

Nucleolar and coiled-body phosphoprotein 1, 140 kDa nucleolar phosphoprotein, Nopp140, Hepatitis C virus NS5A-transactivated protein 13, HCV NS5A-transactivated protein 13, Nucleolar 130 kDa protein, Nucleolar phosphoprotein p130, NOLC1 (http://www.genenames.org/cgi-bin/gene_symbol_report?hgnc_id=15608)
HGNC:15608

Calculated MW

110 kDa KDa

Application Details

WB 1:500-1:2000 IHC 1:50-1:200 ICC/IF 1:50-1:200

Contents

Rabbit IgG in phosphate buffered saline, pH 7.4, 150mM NaCl, 0.02% sodium azide and 50% glycerol, 0.4-0.5mg/ml BSA.

Immunogen

A synthesized peptide derived from human NOLC1

Purification

Affinity-chromatography

Storage

Store at -20°C for one year. For short term storage and frequent use, store at 4°C for up to one month. Avoid repeated freeze-thaw cycles.

Anti-NOLC1 Rabbit Monoclonal Antibody - Protein Information

Name NOLC1 ([HGNC:15608](#))

Function

Nucleolar protein that acts as a regulator of RNA polymerase I by connecting RNA polymerase I with enzymes responsible for ribosomal processing and modification (PubMed:[10567578](http://www.uniprot.org/citations/10567578), PubMed:[26399832](http://www.uniprot.org/citations/26399832)). Required for neural crest specification: following monoubiquitination by the BCR(KBTBD8) complex, associates with TCOF1 and acts as a platform to connect RNA polymerase I with enzymes responsible for ribosomal processing and modification, leading to remodel the translational program of differentiating cells in favor of neural crest specification (PubMed:[26399832](http://www.uniprot.org/citations/26399832)). Involved in nucleogenesis, possibly by playing a role in the maintenance of the fundamental structure of the fibrillar center and dense fibrillar component in the nucleolus (PubMed:[9016786](http://www.uniprot.org/citations/9016786)). It has intrinsic GTPase and ATPase activities (PubMed:[9016786](http://www.uniprot.org/citations/9016786)).

Cellular Location

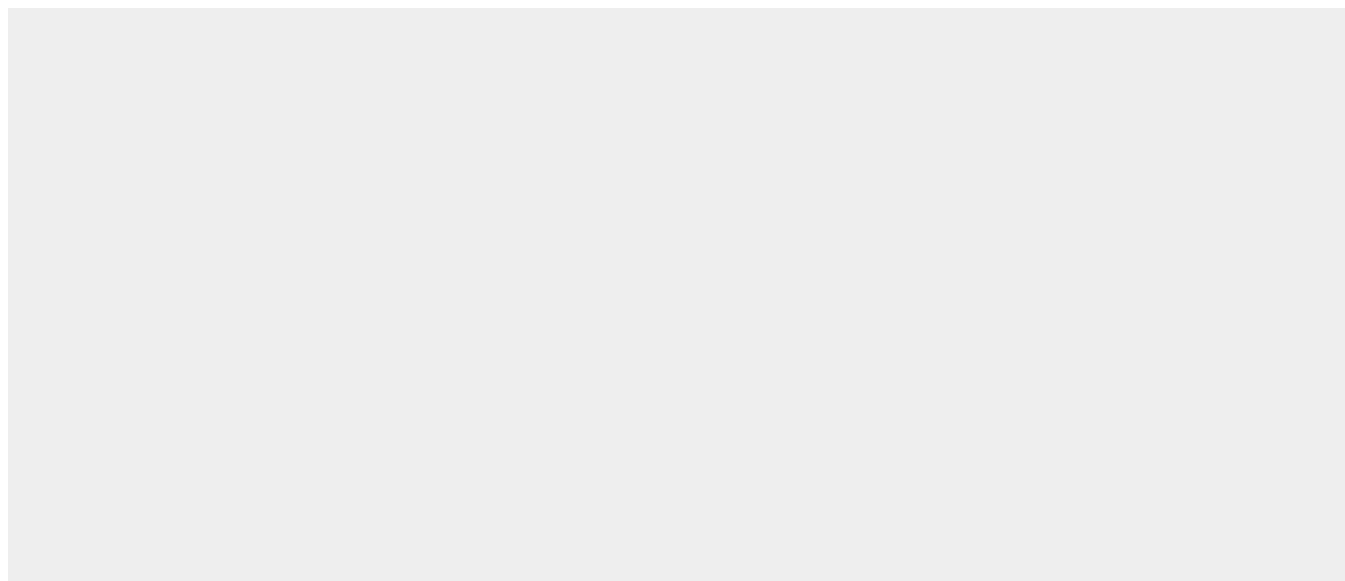
Nucleus, nucleolus. Cytoplasm. Note=Shuttles between the nucleolus and the cytoplasm. At telophase it begins to assemble into granular-like pre-nucleolar bodies which are subsequently relocated to nucleoli at the early G1-phase.

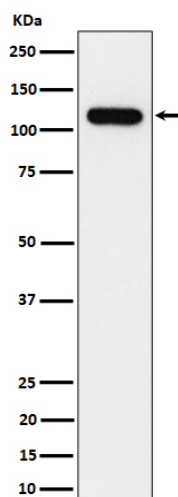
Anti-NOLC1 Rabbit Monoclonal Antibody - Protocols

Provided below are standard protocols that you may find useful for product applications.

- [Western Blot](#)
- [Blocking Peptides](#)
- [Dot Blot](#)
- [Immunohistochemistry](#)
- [Immunofluorescence](#)
- [Immunoprecipitation](#)
- [Flow Cytometry](#)
- [Cell Culture](#)

Anti-NOLC1 Rabbit Monoclonal Antibody - Images





Western blot analysis of NOLC1 expression in HeLa cell lysate.