

**Anti-Nesprin3 Rabbit Monoclonal Antibody**  
**Catalog # ABO16501****Specification**

---

**Anti-Nesprin3 Rabbit Monoclonal Antibody - Product Information**

Application	WB
Primary Accession	<a href="#">Q6ZMZ3</a>
Host	Rabbit
Isotype	IgG
Reactivity	Human
Clonality	Monoclonal
Format	Liquid

**Description**

Anti-Nesprin3 Rabbit Monoclonal Antibody . Tested in WB application. This antibody reacts with Human.

**Anti-Nesprin3 Rabbit Monoclonal Antibody - Additional Information**

**Gene ID** 161176

**Other Names**

Nesprin-3, KASH domain-containing protein 3, KASH3, Nuclear envelope spectrin repeat protein 3, SYNE3 (<a href="http://www.genenames.org/cgi-bin/gene\_symbol\_report?hgnc\_id=19861" target="\_blank">HGNC:19861</a>)

**Calculated MW**

100 kDa KDa

**Application Details**

WB 1:500-1:2000

**Contents**

Rabbit IgG in phosphate buffered saline, pH 7.4, 150mM NaCl, 0.02% sodium azide and 50% glycerol, 0.4-0.5mg/ml BSA.

**Immunogen**

A synthesized peptide derived from human Nesprin3

**Purification**

Affinity-chromatography

**Storage**

**Store at -20°C for one year. For short term storage and frequent use, store at 4°C for up to one month. Avoid repeated freeze-thaw cycles.**

**Anti-Nesprin3 Rabbit Monoclonal Antibody - Protein Information**

**Name** SYNE3 ([HGNC:19861](#))

**Function**

As a component of the LINC (Linker of Nucleoskeleton and Cytoskeleton) complex involved in the connection between the nuclear lamina and the cytoskeleton. The nucleocytoplasmic interactions established by the LINC complex play an important role in the transmission of mechanical forces across the nuclear envelope and in nuclear movement and positioning. Probable anchoring protein which tethers the nucleus to the cytoskeleton by binding PLEC which can associate with the intermediate filament system. Plays a role in the regulation of aortic epithelial cell morphology, and is required for flow-induced centrosome polarization and directional migration in aortic endothelial cells.

**Cellular Location**

Nucleus outer membrane; Single-pass type IV membrane protein. Nucleus envelope. Rough endoplasmic reticulum

**Tissue Location**

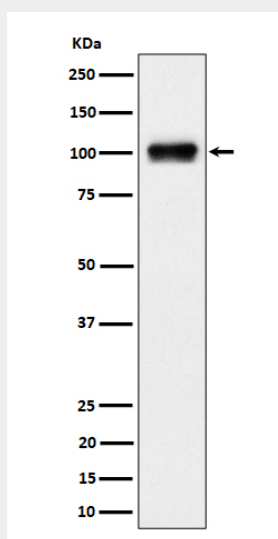
Expressed in aortic endothelial cells (at protein level).

**Anti-Nesprin3 Rabbit Monoclonal Antibody - Protocols**

Provided below are standard protocols that you may find useful for product applications.

- [Western Blot](#)
- [Blocking Peptides](#)
- [Dot Blot](#)
- [Immunohistochemistry](#)
- [Immunofluorescence](#)
- [Immunoprecipitation](#)
- [Flow Cytometry](#)
- [Cell Culture](#)

**Anti-Nesprin3 Rabbit Monoclonal Antibody - Images**



Western blot analysis of Nesprin3 expression in 293 cell lysate.