

Anti-UCHL5IP Rabbit Monoclonal Antibody
Catalog # ABO16502**Specification**

Anti-UCHL5IP Rabbit Monoclonal Antibody - Product Information

Application	WB
Primary Accession	Q99871
Host	Rabbit
Isotype	IgG
Reactivity	Human
Clonality	Monoclonal
Format	Liquid

Description

Anti-UCHL5IP Rabbit Monoclonal Antibody . Tested in WB application. This antibody reacts with Human.

Anti-UCHL5IP Rabbit Monoclonal Antibody - Additional Information

Gene ID 55559

Other Names

HAUS augmin-like complex subunit 7, 26S proteasome-associated UCH37-interacting protein 1, UCHL5-interacting protein, X-linked protein STS1769, HAUS7, UCHL5IP, UIP1

Calculated MW

37 kDa KDa

Application Details

WB 1:500-1:2000

Contents

Rabbit IgG in phosphate buffered saline, pH 7.4, 150mM NaCl, 0.02% sodium azide and 50% glycerol, 0.4-0.5mg/ml BSA.

Immunogen

A synthesized peptide derived from human UCHL5IP

Purification

Affinity-chromatography

Storage

Store at -20°C for one year. For short term storage and frequent use, store at 4°C for up to one month. Avoid repeated freeze-thaw cycles.

Anti-UCHL5IP Rabbit Monoclonal Antibody - Protein Information

Name HAUS7

Synonyms UCHL5IP, UIP1

Function

Contributes to mitotic spindle assembly, maintenance of centrosome integrity and completion of cytokinesis as part of the HAUS augmin-like complex.

Cellular Location

Cytoplasm, cytoskeleton, microtubule organizing center, centrosome. Cytoplasm, cytoskeleton, spindle. Note=Localizes to interphase centrosomes and to mitotic spindle microtubules.

Tissue Location

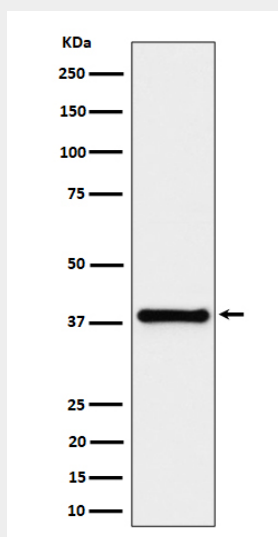
Detected in spleen, thymus, testis, ovary, small intestine and colon, with highest levels of expression in testis and ovary.

Anti-UCHL5IP Rabbit Monoclonal Antibody - Protocols

Provided below are standard protocols that you may find useful for product applications.

- [Western Blot](#)
- [Blocking Peptides](#)
- [Dot Blot](#)
- [Immunohistochemistry](#)
- [Immunofluorescence](#)
- [Immunoprecipitation](#)
- [Flow Cytometry](#)
- [Cell Culture](#)

Anti-UCHL5IP Rabbit Monoclonal Antibody - Images



Western blot analysis of UCHL5IP expression in HeLa cell lysate.