

Anti-NDUFC2 Rabbit Monoclonal Antibody
Catalog # ABO16510**Specification****Anti-NDUFC2 Rabbit Monoclonal Antibody - Product Information**

Application	WB, IHC
Primary Accession	O95298
Host	Rabbit
Isotype	IgG
Reactivity	Human
Clonality	Monoclonal
Format	Liquid

Description

Anti-NDUFC2 Rabbit Monoclonal Antibody . Tested in WB, IHC applications. This antibody reacts with Human.

Anti-NDUFC2 Rabbit Monoclonal Antibody - Additional Information

Gene ID 4718

Other Names

NADH dehydrogenase [ubiquinone] 1 subunit C2, Complex I-B14.5b, CI-B14.5b, Human lung cancer oncogene 1 protein, HLC-1, NADH-ubiquinone oxidoreductase subunit B14.5b, NDUFC2 ([HGNC:7706](http://www.genenames.org/cgi-bin/gene_symbol_report?hgnc_id=7706))

Calculated MW

12 kDa KDa

Application Details

WB 1:500-1:2000
IHC 1:50-1:200

Contents

Rabbit IgG in phosphate buffered saline, pH 7.4, 150mM NaCl, 0.02% sodium azide and 50% glycerol, 0.4-0.5mg/ml BSA.

Immunogen

A synthesized peptide derived from human NDUFC2

Purification

Affinity-chromatography

Storage

Store at -20°C for one year. For short term storage and frequent use, store at 4°C for up to one month. Avoid repeated freeze-thaw cycles.

Anti-NDUFC2 Rabbit Monoclonal Antibody - Protein Information

Name NDUFC2 ([HGNC:7706](#))

Function

Accessory subunit of the mitochondrial membrane respiratory chain NADH dehydrogenase (Complex I), that is believed not to be involved in catalysis but required for the complex assembly. Complex I functions in the transfer of electrons from NADH to the respiratory chain. The immediate electron acceptor for the enzyme is believed to be ubiquinone.

Cellular Location

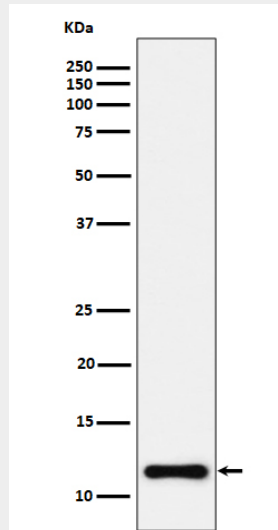
Mitochondrion inner membrane; Single-pass membrane protein; Matrix side

Anti-NDUFC2 Rabbit Monoclonal Antibody - Protocols

Provided below are standard protocols that you may find useful for product applications.

- [Western Blot](#)
- [Blocking Peptides](#)
- [Dot Blot](#)
- [Immunohistochemistry](#)
- [Immunofluorescence](#)
- [Immunoprecipitation](#)
- [Flow Cytometry](#)
- [Cell Culture](#)

Anti-NDUFC2 Rabbit Monoclonal Antibody - Images



Western blot analysis of NDUFC2 expression in HeLa cell lysate.