

Anti-HMGCL Rabbit Monoclonal Antibody
Catalog # ABO16514**Specification**

Anti-HMGCL Rabbit Monoclonal Antibody - Product Information

Application	WB, IHC
Primary Accession	P35914
Host	Rabbit
Isotype	IgG
Reactivity	Human
Clonality	Monoclonal
Format	Liquid

Description

Anti-HMGCL Rabbit Monoclonal Antibody . Tested in WB, IHC applications. This antibody reacts with Human.

Anti-HMGCL Rabbit Monoclonal Antibody - Additional Information

Gene ID 3155

Other Names

Hydroxymethylglutaryl-CoA lyase, mitochondrial, HL, HMG-CoA lyase, 4.1.3.4, 3-hydroxy-3-methylglutarate-CoA lyase, HMGCL

Calculated MW

30 kDa KDa

Application Details

WB 1:500-1:2000
IHC 1:50-1:200

Contents

Rabbit IgG in phosphate buffered saline, pH 7.4, 150mM NaCl, 0.02% sodium azide and 50% glycerol, 0.4-0.5mg/ml BSA.

Immunogen

A synthesized peptide derived from human HMGCL

Purification

Affinity-chromatography

Storage

Store at -20°C for one year. For short term storage and frequent use, store at 4°C for up to one month. Avoid repeated freeze-thaw cycles.

Anti-HMGCL Rabbit Monoclonal Antibody - Protein Information

Name HMGCL

Function

Mitochondrial 3-hydroxy-3-methylglutaryl-CoA lyase that catalyzes a cation-dependent cleavage of (S)-3-hydroxy-3-methylglutaryl-CoA into acetyl-CoA and acetoacetate, a key step in ketogenesis. Terminal step in leucine catabolism. Ketone bodies (beta-hydroxybutyrate, acetoacetate and acetone) are essential as an alternative source of energy to glucose, as lipid precursors and as regulators of metabolism.

Cellular Location

Mitochondrion matrix {ECO:0000250|UniProtKB:P38060}. Peroxisome {ECO:0000250|UniProtKB:P38060}. Note=Unprocessed form is peroxisomal {ECO:0000250|UniProtKB:P38060}

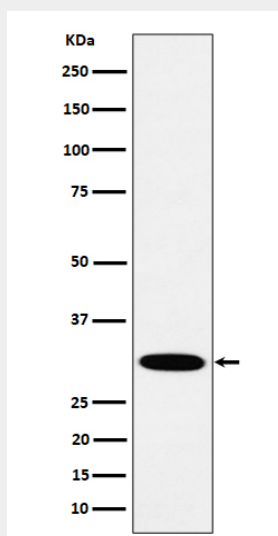
Tissue Location

Highest expression in liver. Expressed in pancreas, kidney, intestine, testis, fibroblasts and lymphoblasts. Very low expression in brain and skeletal muscle. The relative expression of isoform 2 (at mRNA level) is highest in heart (30%), skeletal muscle (22%), and brain (14%).

Anti-HMGCL Rabbit Monoclonal Antibody - Protocols

Provided below are standard protocols that you may find useful for product applications.

- [Western Blot](#)
- [Blocking Peptides](#)
- [Dot Blot](#)
- [Immunohistochemistry](#)
- [Immunofluorescence](#)
- [Immunoprecipitation](#)
- [Flow Cytometry](#)
- [Cell Culture](#)

Anti-HMGCL Rabbit Monoclonal Antibody - Images

Western blot analysis of HMGCL expression in A431 cell lysate.