

Anti-NUP155 Rabbit Monoclonal Antibody
Catalog # ABO16520**Specification**

Anti-NUP155 Rabbit Monoclonal Antibody - Product Information

Application	WB
Primary Accession	O75694
Host	Rabbit
Isotype	IgG
Reactivity	Human
Clonality	Monoclonal
Format	Liquid

Description

Anti-NUP155 Rabbit Monoclonal Antibody . Tested in WB application. This antibody reacts with Human.

Anti-NUP155 Rabbit Monoclonal Antibody - Additional Information

Gene ID 9631

Other Names

Nuclear pore complex protein Nup155, 155 kDa nucleoporin, Nucleoporin Nup155, NUP155, KIAA0791

Calculated MW

155 kDa KDa

Application Details

WB 1:500-1:2000

Contents

Rabbit IgG in phosphate buffered saline, pH 7.4, 150mM NaCl, 0.02% sodium azide and 50% glycerol, 0.4-0.5mg/ml BSA.

Immunogen

A synthesized peptide derived from human NUP155

Purification

Affinity-chromatography

Storage

Store at -20°C for one year. For short term storage and frequent use, store at 4°C for up to one month. Avoid repeated freeze-thaw cycles.

Anti-NUP155 Rabbit Monoclonal Antibody - Protein Information

Name NUP155

Synonyms KIAA0791**Function**

Essential component of nuclear pore complex. Could be essential for embryogenesis. Nucleoporins may be involved both in binding and translocating proteins during nucleocytoplasmic transport.

Cellular Location

Nucleus, nuclear pore complex {ECO:0000250|UniProtKB:P37199}. Nucleus membrane {ECO:0000250|UniProtKB:P37199}; Peripheral membrane protein {ECO:0000250|UniProtKB:P37199}; Cytoplasmic side {ECO:0000250|UniProtKB:P37199}. Nucleus membrane {ECO:0000250|UniProtKB:P37199}; Peripheral membrane protein {ECO:0000250|UniProtKB:P37199}; Nucleoplasmic side {ECO:0000250|UniProtKB:P37199}. Note=In mitosis, assumes a diffuse cytoplasmic distribution probably as a monomer, before reversing back into a punctate nuclear surface localization at the end of mitosis {ECO:0000250|UniProtKB:P37199}

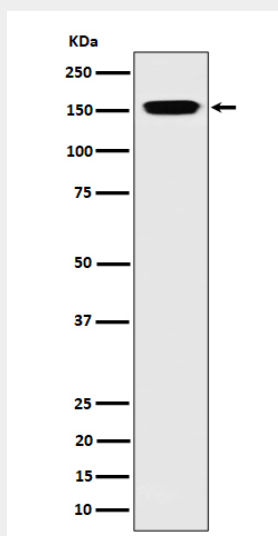
Tissue Location

Expressed in all tissues tested, including heart, brain, placenta, lung, liver, skeletal muscle, kidney and pancreas

Anti-NUP155 Rabbit Monoclonal Antibody - Protocols

Provided below are standard protocols that you may find useful for product applications.

- [Western Blot](#)
- [Blocking Peptides](#)
- [Dot Blot](#)
- [Immunohistochemistry](#)
- [Immunofluorescence](#)
- [Immunoprecipitation](#)
- [Flow Cytometry](#)
- [Cell Culture](#)

Anti-NUP155 Rabbit Monoclonal Antibody - Images

Western blot analysis of NUP155 expression in 293 cell lysate.