

**Anti-ACTR1B Rabbit Monoclonal Antibody**  
Catalog # ABO16523

**Specification**

---

**Anti-ACTR1B Rabbit Monoclonal Antibody - Product Information**

Application	WB, IHC, IF, ICC, IP, FC
Primary Accession	<a href="#">P42025</a>
Host	Rabbit
Isotype	IgG
Reactivity	Human
Clonality	Monoclonal
Format	Liquid

**Description**

Anti-ACTR1B Rabbit Monoclonal Antibody . Tested in WB, IHC, ICC/IF, IP, Flow Cytometry applications. This antibody reacts with Human.

**Anti-ACTR1B Rabbit Monoclonal Antibody - Additional Information**

**Gene ID** 10120

**Other Names**

Beta-centractin, Actin-related protein 1B, ARP1B, ACTR1B, CTRN2

**Calculated MW**

42 kDa KDa

**Application Details**

WB 1:500-1:2000<br>IHC 1:50-1:200<br>ICC/IF 1:50-1:200<br>IP 1:50<br>FC 1:50

**Contents**

Rabbit IgG in phosphate buffered saline, pH 7.4, 150mM NaCl, 0.02% sodium azide and 50% glycerol, 0.4-0.5mg/ml BSA.

**Immunogen**

A synthesized peptide derived from human ACTR1B

**Purification**

Affinity-chromatography

**Storage**

**Store at -20°C for one year. For short term storage and frequent use, store at 4°C for up to one month. Avoid repeated freeze-thaw cycles.**

**Anti-ACTR1B Rabbit Monoclonal Antibody - Protein Information**

**Name** ACTR1B

## Synonyms CTRN2

### Function

Component of a multi-subunit complex involved in microtubule based vesicle motility. It is associated with the centrosome.

### Cellular Location

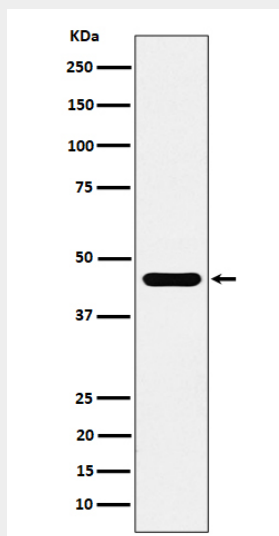
Cytoplasm, cytoskeleton. Cytoplasm, cytoskeleton, microtubule organizing center, centrosome

## Anti-ACTR1B Rabbit Monoclonal Antibody - Protocols

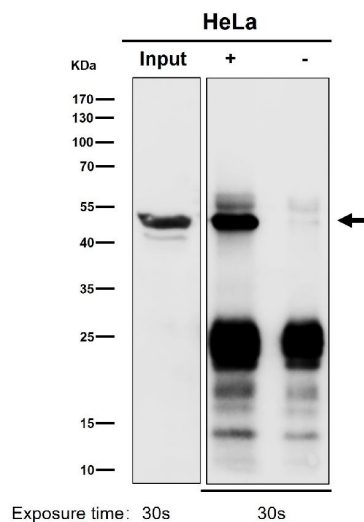
Provided below are standard protocols that you may find useful for product applications.

- [Western Blot](#)
- [Blocking Peptides](#)
- [Dot Blot](#)
- [Immunohistochemistry](#)
- [Immunofluorescence](#)
- [Immunoprecipitation](#)
- [Flow Cytometry](#)
- [Cell Culture](#)

## Anti-ACTR1B Rabbit Monoclonal Antibody - Images



Western blot analysis of ACTR1B expression in 293 cell lysate.



Immunoprecipitate (IP) analysis using the Antibody at 1:50 dilution. (wb at 1:500 dilution)