

Anti-PMF1 Rabbit Monoclonal Antibody
Catalog # ABO16527**Specification**

Anti-PMF1 Rabbit Monoclonal Antibody - Product Information

Application	WB, IP
Primary Accession	Q6P1K2
Host	Rabbit
Isotype	IgG
Reactivity	Rat, Human, Mouse
Clonality	Monoclonal
Format	Liquid

Description

Anti-PMF1 Rabbit Monoclonal Antibody . Tested in WB, IP applications. This antibody reacts with Human, Mouse, Rat.

Anti-PMF1 Rabbit Monoclonal Antibody - Additional Information

Gene ID 100527963;11243

Other Names

Polyamine-modulated factor 1, PMF-1, PMF1 {ECO:0000312|EMBL:AAH65031.1}

Calculated MW

25 kDa KDa

Application Details

WB 1:500-1:2000
IP 1:50

Contents

Rabbit IgG in phosphate buffered saline, pH 7.4, 150mM NaCl, 0.02% sodium azide and 50% glycerol, 0.4-0.5mg/ml BSA.

Immunogen

A synthesized peptide derived from human PMF1

Purification

Affinity-chromatography

Storage

Store at -20°C for one year. For short term storage and frequent use, store at 4°C for up to one month. Avoid repeated freeze-thaw cycles.

Anti-PMF1 Rabbit Monoclonal Antibody - Protein Information

Name PMF1 {ECO:0000312|EMBL:AAH65031.1}

Function

Part of the MIS12 complex which is required for normal chromosome alignment and segregation and kinetochore formation during mitosis. May act as a cotranscription partner of NFE2L2 involved in regulation of polyamine-induced transcription of SSAT.

Cellular Location

Nucleus. Chromosome, centromere, kinetochore Note=Associated with the kinetochore

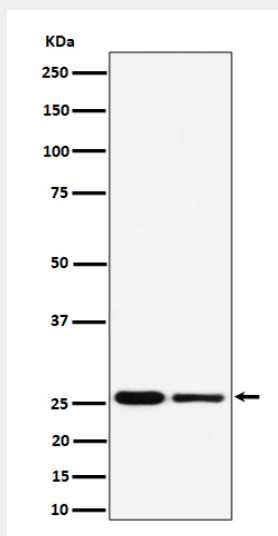
Tissue Location

Highest levels of expression in heart and skeletal muscle, with significant levels expressed in kidney and liver

Anti-PMF1 Rabbit Monoclonal Antibody - Protocols

Provided below are standard protocols that you may find useful for product applications.

- [Western Blot](#)
- [Blocking Peptides](#)
- [Dot Blot](#)
- [Immunohistochemistry](#)
- [Immunofluorescence](#)
- [Immunoprecipitation](#)
- [Flow Cytometry](#)
- [Cell Culture](#)

Anti-PMF1 Rabbit Monoclonal Antibody - Images

Western blot analysis of PMF1 expression in (1) HeLa cell lysate; (2) RAW 264.7 cell lysate.