

**Anti-Adiponectin Rabbit Monoclonal Antibody**  
**Catalog # ABO16528****Specification**

---

**Anti-Adiponectin Rabbit Monoclonal Antibody - Product Information**

Application	WB, IHC, IF, ICC
Primary Accession	<a href="#">Q60994</a>
Host	Rabbit
Isotype	IgG
Reactivity	Mouse
Clonality	Monoclonal
Format	Liquid

**Description**

Anti-Adiponectin Rabbit Monoclonal Antibody . Tested in WB, IHC, ICC/IF applications. This antibody reacts with Mouse.

**Anti-Adiponectin Rabbit Monoclonal Antibody - Additional Information**

**Gene ID** 11450

**Other Names**

Adiponectin, 30 kDa adipocyte complement-related protein, Adipocyte complement-related 30 kDa protein, ACRP30, Adipocyte, C1q and collagen domain-containing protein, Adipocyte-specific protein AdipoQ, Adipoq, Acdc, Acrp30, Apm1

**Calculated MW**

30 kDa KDa

**Application Details**

WB 1:500-1:2000<br>IHC 1:50-1:200<br>ICC/IF 1:50-1:200

**Contents**

Rabbit IgG in phosphate buffered saline, pH 7.4, 150mM NaCl, 0.02% sodium azide and 50% glycerol, 0.4-0.5mg/ml BSA.

**Immunogen**

A synthesized peptide derived from human Adiponectin

**Purification**

Affinity-chromatography

**Storage**

**Store at -20°C for one year. For short term storage and frequent use, store at 4°C for up to one month. Avoid repeated freeze-thaw cycles.**

**Anti-Adiponectin Rabbit Monoclonal Antibody - Protein Information**

**Name** Adipoq

**Synonyms** Acdc, Acrp30, Apm1

**Function**

Important adipokine involved in the control of fat metabolism and insulin sensitivity, with direct anti-diabetic, anti-atherogenic and anti-inflammatory activities. Stimulates AMPK phosphorylation and activation in the liver and the skeletal muscle, enhancing glucose utilization and fatty-acid combustion. Antagonizes TNF-alpha by negatively regulating its expression in various tissues such as liver and macrophages, and also by counteracting its effects. Inhibits endothelial NF-kappa-B signaling through a cAMP-dependent pathway. May play a role in cell growth, angiogenesis and tissue remodeling by binding and sequestering various growth factors with distinct binding affinities, depending on the type of complex, LMW, MMW or HMW.

**Cellular Location**

Secreted.

**Tissue Location**

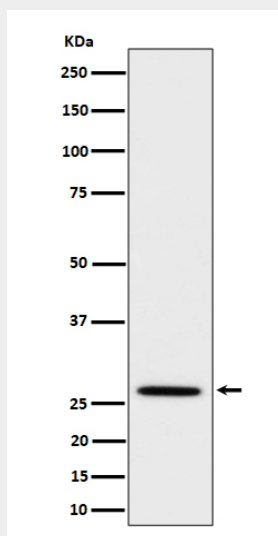
Synthesized exclusively by adipocytes and secreted into plasma

**Anti-Adiponectin Rabbit Monoclonal Antibody - Protocols**

Provided below are standard protocols that you may find useful for product applications.

- [Western Blot](#)
- [Blocking Peptides](#)
- [Dot Blot](#)
- [Immunohistochemistry](#)
- [Immunofluorescence](#)
- [Immunoprecipitation](#)
- [Flow Cytometry](#)
- [Cell Culture](#)

**Anti-Adiponectin Rabbit Monoclonal Antibody - Images**



Western blot analysis of Adiponectin expression in mouse kidney cell lysate.