

**Anti-SLC25A12 Rabbit Monoclonal Antibody**  
Catalog # ABO16531**Specification****Anti-SLC25A12 Rabbit Monoclonal Antibody - Product Information**

Application	WB, IP
Primary Accession	<a href="#">O75746</a>
Host	Rabbit
Isotype	IgG
Reactivity	Rat, Human, Mouse
Clonality	Monoclonal
Format	Liquid

**Description**

Anti-SLC25A12 Rabbit Monoclonal Antibody . Tested in WB, IP applications. This antibody reacts with Human, Mouse, Rat.

**Anti-SLC25A12 Rabbit Monoclonal Antibody - Additional Information**

**Gene ID** 8604

**Other Names**

Electrogenic aspartate/glutamate antiporter SLC25A12, mitochondrial, Araceli hiperlarga, Aralar, Aralar1, Mitochondrial aspartate glutamate carrier 1, Solute carrier family 25 member 12 {ECO:0000312|HGNC:HGNC:10982}, SLC25A12 ([HGNC:10982](http://www.genenames.org/cgi-bin/gene_symbol_report?hgnc_id=10982))

**Calculated MW**

75 kDa KDa

**Application Details**

WB 1:500-1:2000<br>IP 1:50

**Contents**

Rabbit IgG in phosphate buffered saline, pH 7.4, 150mM NaCl, 0.02% sodium azide and 50% glycerol, 0.4-0.5mg/ml BSA.

**Immunogen**

A synthesized peptide derived from human SLC25A12

**Purification**

Affinity-chromatography

Storage

**Store at -20°C for one year. For short term storage and frequent use, store at 4°C for up to one month. Avoid repeated freeze-thaw cycles.**

**Anti-SLC25A12 Rabbit Monoclonal Antibody - Protein Information**

Name SLC25A12 ([HGNC:10982](#))

#### Function

Mitochondrial electrogenic aspartate/glutamate antiporter that favors efflux of aspartate and entry of glutamate and proton within the mitochondria as part of the malate-aspartate shuttle (PubMed:[11566871](http://www.uniprot.org/citations/11566871)), (PubMed:[19641205](http://www.uniprot.org/citations/19641205)), (PubMed:[24515575](http://www.uniprot.org/citations/24515575)), (PubMed:[38945283](http://www.uniprot.org/citations/38945283)). Also mediates the uptake of L-cysteinesulfinic acid (3-sulfino-L-alanine) by mitochondria in exchange of L-glutamate and proton (PubMed:[11566871](http://www.uniprot.org/citations/11566871)). Can also exchange L-cysteinesulfinic acid with aspartate in their anionic form without any proton translocation (PubMed:[11566871](http://www.uniprot.org/citations/11566871)). Lacks transport activity towards L-glutamine or gamma-aminobutyric acid (GABA) (PubMed:[38945283](http://www.uniprot.org/citations/38945283)).

#### Cellular Location

Mitochondrion inner membrane; Multi-pass membrane protein

#### Tissue Location

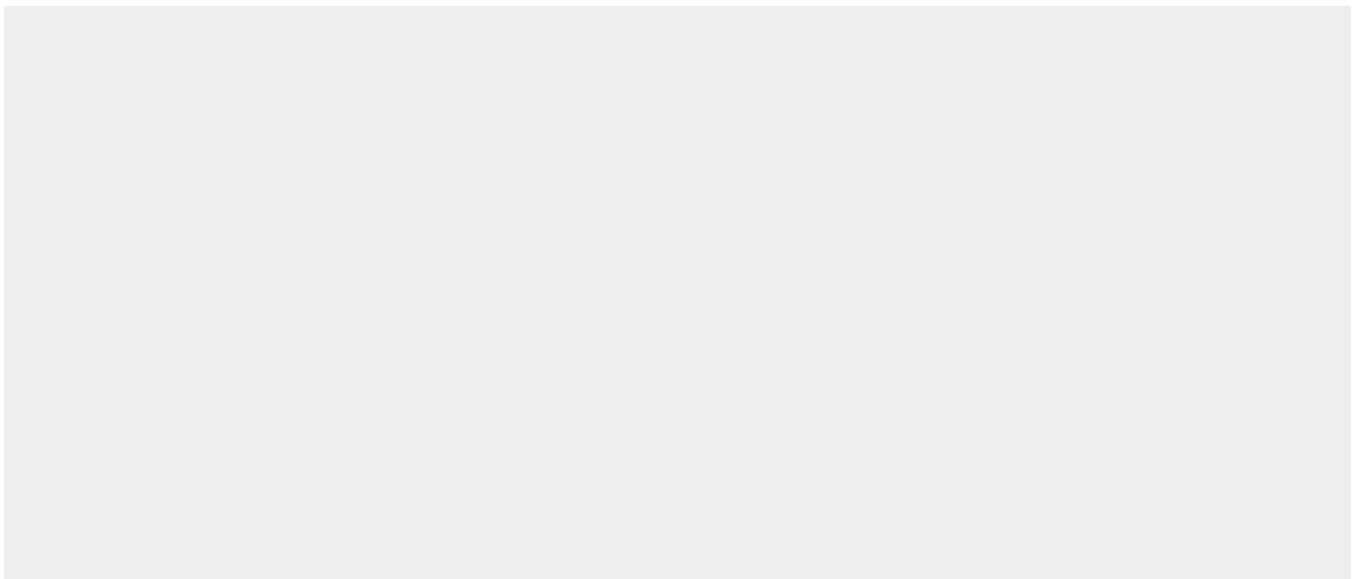
Expressed predominantly in the heart and skeletal muscle, weakly in brain and kidney.

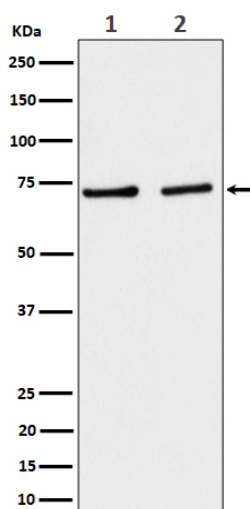
### Anti-SLC25A12 Rabbit Monoclonal Antibody - Protocols

Provided below are standard protocols that you may find useful for product applications.

- [Western Blot](#)
- [Blocking Peptides](#)
- [Dot Blot](#)
- [Immunohistochemistry](#)
- [Immunofluorescence](#)
- [Immunoprecipitation](#)
- [Flow Cytometry](#)
- [Cell Culture](#)

### Anti-SLC25A12 Rabbit Monoclonal Antibody - Images





Western blot analysis of SLC25A12 expression in (1) A431 cell lysate; (2) NIH/3T3 cell lysate.