

Anti-TIM44 Rabbit Monoclonal Antibody
Catalog # ABO16534**Specification**

Anti-TIM44 Rabbit Monoclonal Antibody - Product Information

Application	WB, IF, ICC, IP, FC
Primary Accession	O43615
Host	Rabbit
Isotype	IgG
Reactivity	Rat, Human
Clonality	Monoclonal
Format	Liquid

Description

Anti-TIM44 Rabbit Monoclonal Antibody . Tested in WB, ICC/IF, IP, Flow Cytometry applications.
This antibody reacts with Human, Rat.

Anti-TIM44 Rabbit Monoclonal Antibody - Additional Information

Gene ID 10469

Other Names

Mitochondrial import inner membrane translocase subunit TIM44, TIMM44, MIMT44, TIM44

Calculated MW

45 kDa KDa

Application Details

WB 1:500-1:2000
ICC/IF 1:50-1:200
IP 1:50
FC 1:50

Contents

Rabbit IgG in phosphate buffered saline, pH 7.4, 150mM NaCl, 0.02% sodium azide and 50% glycerol, 0.4-0.5mg/ml BSA.

Immunogen

A synthesized peptide derived from human TIM44

Purification

Affinity-chromatography

Storage

Store at -20°C for one year. For short term storage and frequent use, store at 4°C for up to one month. Avoid repeated freeze-thaw cycles.

Anti-TIM44 Rabbit Monoclonal Antibody - Protein Information

Name TIMM44

Synonyms MIMT44, TIM44

Function

Essential component of the PAM complex, a complex required for the translocation of transit peptide-containing proteins from the inner membrane into the mitochondrial matrix in an ATP-dependent manner (By similarity). Recruits mitochondrial HSP70 to drive protein translocation into the matrix using ATP as an energy source (By similarity).

Cellular Location

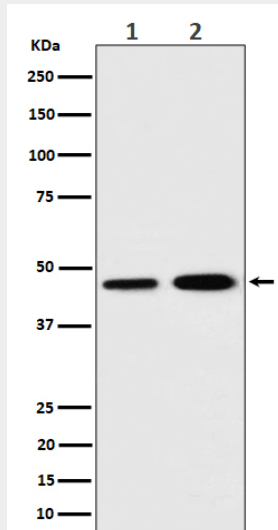
Mitochondrion inner membrane; Peripheral membrane protein; Matrix side. Mitochondrion matrix

Anti-TIM44 Rabbit Monoclonal Antibody - Protocols

Provided below are standard protocols that you may find useful for product applications.

- [Western Blot](#)
- [Blocking Peptides](#)
- [Dot Blot](#)
- [Immunohistochemistry](#)
- [Immunofluorescence](#)
- [Immunoprecipitation](#)
- [Flow Cytometry](#)
- [Cell Culture](#)

Anti-TIM44 Rabbit Monoclonal Antibody - Images



Western blot analysis of TIM44 expression in (1) K562 cell lysate; (2) C6 cell lysate.