

Anti-TMF Rabbit Monoclonal Antibody
Catalog # ABO16552**Specification**

Anti-TMF Rabbit Monoclonal Antibody - Product Information

Application	WB, IF, ICC
Primary Accession	P82094
Host	Rabbit
Isotype	IgG
Reactivity	Human
Clonality	Monoclonal
Format	Liquid

Description

Anti-TMF Rabbit Monoclonal Antibody . Tested in WB, ICC/IF applications. This antibody reacts with Human.

Anti-TMF Rabbit Monoclonal Antibody - Additional Information

Gene ID 7110

Other Names

TATA element modulatory factor, TMF, Androgen receptor coactivator 160 kDa protein, Androgen receptor-associated protein of 160 kDa, TMF1, ARA160

Calculated MW

160 kDa KDa

Application Details

WB 1:500-1:2000
ICC/IF 1:50-1:200

Contents

Rabbit IgG in phosphate buffered saline, pH 7.4, 150mM NaCl, 0.02% sodium azide and 50% glycerol, 0.4-0.5mg/ml BSA.

Immunogen

A synthesized peptide derived from human TMF

Purification

Affinity-chromatography

Storage

Store at -20°C for one year. For short term storage and frequent use, store at 4°C for up to one month. Avoid repeated freeze-thaw cycles.

Anti-TMF Rabbit Monoclonal Antibody - Protein Information

Name TMF1

Synonyms ARA160**Function**

Potential coactivator of the androgen receptor. Mediates STAT3 degradation. May play critical roles in two RAB6-dependent retrograde transport processes: one from endosomes to the Golgi and the other from the Golgi to the ER. This protein binds the HIV-1 TATA element and inhibits transcriptional activation by the TATA-binding protein (TBP).

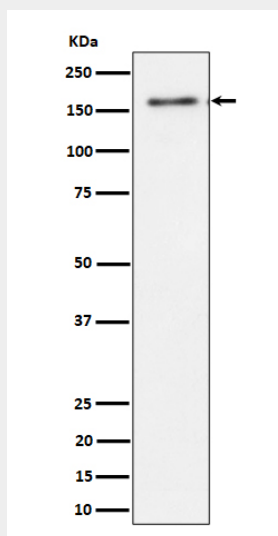
Cellular Location

Cytoplasm. Nucleus. Golgi apparatus membrane. Note=Concentrated at the budding structures localized at the tips of cisternae

Anti-TMF Rabbit Monoclonal Antibody - Protocols

Provided below are standard protocols that you may find useful for product applications.

- [Western Blot](#)
- [Blocking Peptides](#)
- [Dot Blot](#)
- [Immunohistochemistry](#)
- [Immunofluorescence](#)
- [Immunoprecipitation](#)
- [Flow Cytometry](#)
- [Cell Culture](#)

Anti-TMF Rabbit Monoclonal Antibody - Images

Western blot analysis of TMF expression in HeLa cell lysate.