

**Anti-MDH2 Antibody Picoband™ (monoclonal, 5D8C1)**  
**Catalog # ABO16600****Specification****Anti-MDH2 Antibody Picoband™ (monoclonal, 5D8C1) - Product Information**

Application	WB, IHC, IF, ICC
Primary Accession	<a href="#">P40926</a>
Host	Mouse
Isotype	Mouse IgG2b
Reactivity	Human
Clonality	Monoclonal
Format	Lyophilized

**Description**

Anti-MDH2 Antibody Picoband™ (monoclonal, 5D8C1) . Tested in IF, IHC, ICC, WB applications. This antibody reacts with Human.

**Reconstitution**

Adding 0.2 ml of distilled water will yield a concentration of 500 µg/ml.

**Anti-MDH2 Antibody Picoband™ (monoclonal, 5D8C1) - Additional Information**

**Gene ID** 4191

**Other Names**

Malate dehydrogenase, mitochondrial, 1.1.1.37, MDH2

**Calculated MW**

36 kDa KDa

**Application Details**

Western blot, 0.25-0.5 µg/ml, Human<br> Immunohistochemistry(Paraffin-embedded Section), 2-5 µg/ml, Human<br> Immunocytochemistry/Immunofluorescence, 5 µg/ml, Human<br>

**Contents**

Each vial contains 4 mg Trehalose, 0.9 mg NaCl and 0.2 mg Na2HPO4.

**Immunogen**

E.coli-derived human MDH2 recombinant protein (Position: A9-L223). Human MDH2 shares 97.7% and 98.1% amino acid (aa) sequence identity with mouse and rat MDH2, respectively.

**Purification**

Immunogen affinity purified.

**Storage**

**At -20°C for one year from date of receipt.  
After reconstitution, at 4°C for one month.  
It can also be aliquotted and stored frozen  
at -20°C for six months. Avoid repeated  
freezing and thawing.**

## Anti-MDH2 Antibody Picoband™ (monoclonal, 5D8C1) - Protein Information

**Name** MDH2

### Cellular Location

Mitochondrion matrix {ECO:0000250|UniProtKB:P04636}

## Anti-MDH2 Antibody Picoband™ (monoclonal, 5D8C1) - Protocols

Provided below are standard protocols that you may find useful for product applications.

- [Western Blot](#)
- [Blocking Peptides](#)
- [Dot Blot](#)
- [Immunohistochemistry](#)
- [Immunofluorescence](#)
- [Immunoprecipitation](#)
- [Flow Cytometry](#)
- [Cell Culture](#)

## Anti-MDH2 Antibody Picoband™ (monoclonal, 5D8C1) - Images

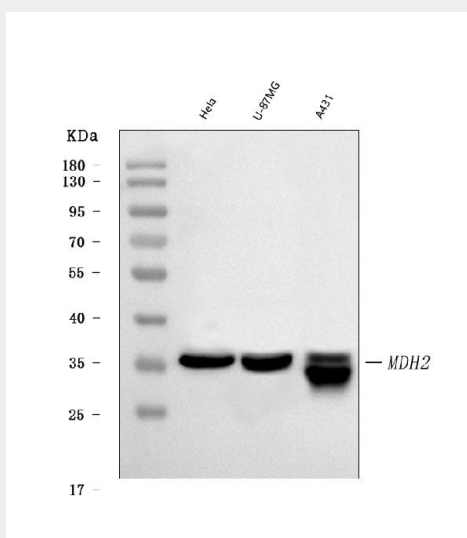


Figure 1. Western blot analysis of MDH2 using anti-MDH2 antibody (M04803-1).

Electrophoresis was performed on a 5-20% SDS-PAGE gel at 70V (Stacking gel) / 90V (Resolving gel) for 2-3 hours. The sample well of each lane was loaded with 30 ug of sample under reducing conditions.

Lane 1: human Hela whole cell lysates,

Lane 2: human U-87MG whole cell lysates,

Lane 3: human A431 whole cell lysates.

After electrophoresis, proteins were transferred to a nitrocellulose membrane at 150 mA for 50-90 minutes. Blocked the membrane with 5% non-fat milk/TBS for 1.5 hour at RT. The membrane was incubated with mouse anti-MDH2 antigen affinity purified monoclonal antibody (Catalog # M04803-1) at 0.5 µg/mL overnight at 4°C, then washed with TBS-0.1%Tween 3 times with 5 minutes each and probed with a goat anti-mouse IgG-HRP secondary antibody at a dilution of 1:10000 for 1.5 hour at RT. The signal is developed using an Enhanced Chemiluminescent detection (ECL) kit (Catalog # EK1001) with Tanon 5200 system. A specific band was detected for

MDH2 at approximately 36 kDa. The expected band size for MDH2 is at 36 kDa.

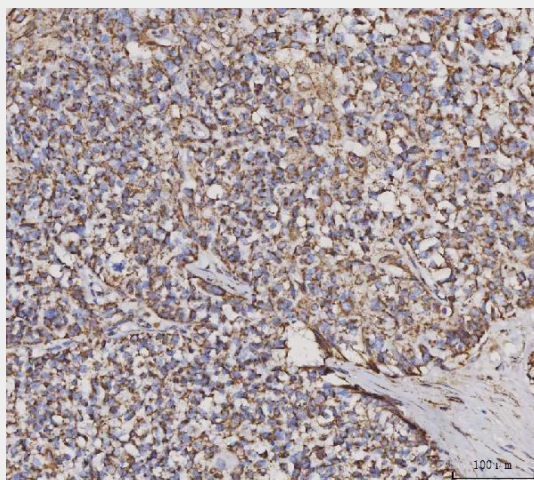


Figure 2. IHC analysis of MDH2 using anti-MDH2 antibody (M04803-1). MDH2 was detected in a paraffin-embedded section of human breast cancer tissue. Heat mediated antigen retrieval was performed in EDTA buffer (pH 8.0, epitope retrieval solution). The tissue section was blocked with 10% goat serum. The tissue section was then incubated with 2  $\mu$ g/ml mouse anti-MDH2 Antibody (M04803-1) overnight at 4°C. Peroxidase Conjugated Goat Anti-mouse IgG was used as secondary antibody and incubated for 30 minutes at 37°C. The tissue section was developed using HRP Conjugated Mouse IgG Super Vision Assay Kit (Catalog # SV0001) with DAB as the chromogen.

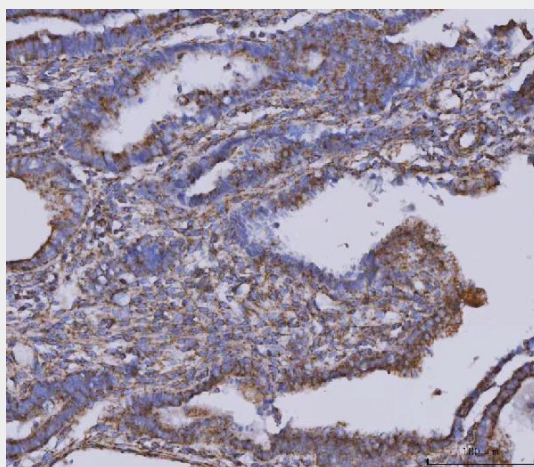


Figure 3. IHC analysis of MDH2 using anti-MDH2 antibody (M04803-1). MDH2 was detected in a paraffin-embedded section of human cervical cancer tissue. Heat mediated antigen retrieval was performed in EDTA buffer (pH 8.0, epitope retrieval solution). The tissue section was blocked with 10% goat serum. The tissue section was then incubated with 2  $\mu$ g/ml mouse anti-MDH2 Antibody (M04803-1) overnight at 4°C. Peroxidase Conjugated Goat Anti-mouse IgG was used as secondary antibody and incubated for 30 minutes at 37°C. The tissue section was developed using HRP Conjugated Mouse IgG Super Vision Assay Kit (Catalog # SV0001) with DAB as the chromogen.

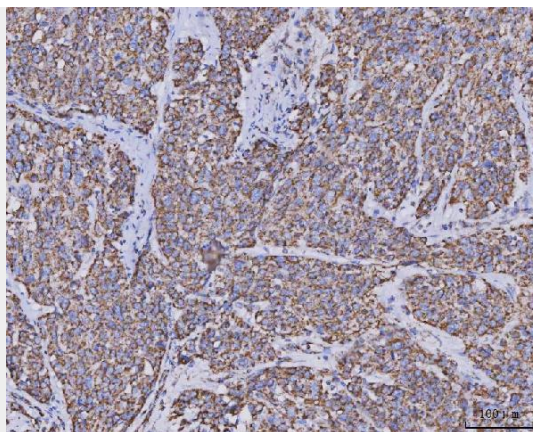


Figure 4. IHC analysis of MDH2 using anti-MDH2 antibody (M04803-1). MDH2 was detected in a paraffin-embedded section of human squamous cell carcinoma tissue. Heat mediated antigen retrieval was performed in EDTA buffer (pH 8.0, epitope retrieval solution). The tissue section was blocked with 10% goat serum. The tissue section was then incubated with 2 µg/ml mouse anti-MDH2 Antibody (M04803-1) overnight at 4°C. Peroxidase Conjugated Goat Anti-mouse IgG was used as secondary antibody and incubated for 30 minutes at 37°C. The tissue section was developed using HRP Conjugated Mouse IgG Super Vision Assay Kit (Catalog # SV0001) with DAB as the chromogen.

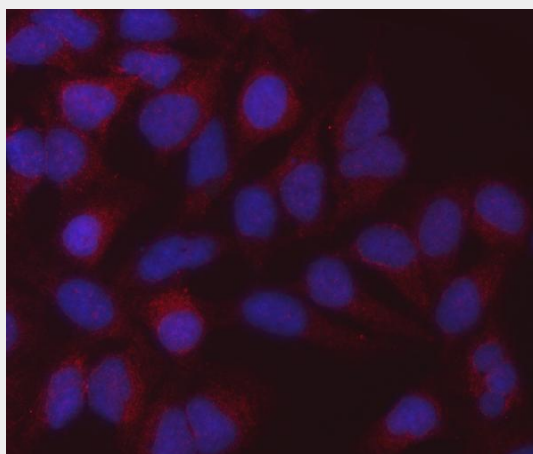


Figure 5. IF analysis of MDH2 using anti-MDH2 antibody (M04803-1). MDH2 was detected in an immunocytochemical section of Hela cells. Enzyme antigen retrieval was performed using IHC enzyme antigen retrieval reagent (AR0022) for 15 mins. The cells were blocked with 10% goat serum. And then incubated with 5 µg/mL mouse anti-MDH2 Antibody (M04803-1) overnight at 4°C. Cy3 Conjugated Goat Anti-Mouse IgG (BA1031) was used as secondary antibody at 1:100 dilution and incubated for 30 minutes at 37°C. The section was counterstained with DAPI. Visualize using a fluorescence microscope and filter sets appropriate for the label used.

#### **Anti-MDH2 Antibody Picoband™ (monoclonal, 5D8C1) - Background**

Malate dehydrogenase, mitochondrial also known as malate dehydrogenase 2 is an enzyme that in humans is encoded by the MDH2 gene. Malate dehydrogenase catalyzes the reversible oxidation of malate to oxaloacetate, utilizing the NAD/NADH cofactor system in the citric acid cycle. The protein encoded by this gene is localized to the mitochondria and may play pivotal roles in the malate-aspartate shuttle that operates in the metabolic coordination between cytosol and mitochondria. Several transcript variants encoding different isoforms have been found for this gene.