

Anti-IL18 binding protein Rabbit Monoclonal Antibody
Catalog # ABO16629**Specification**

Anti-IL18 binding protein Rabbit Monoclonal Antibody - Product Information

Application	WB, IHC
Primary Accession	O95998
Host	Rabbit
Isotype	Rabbit IgG
Reactivity	Rat, Human
Clonality	Monoclonal
Format	Liquid

Description

Anti-IL18 binding protein Rabbit Monoclonal Antibody . Tested in WB, IHC applications. This antibody reacts with Human, Rat.

Anti-IL18 binding protein Rabbit Monoclonal Antibody - Additional Information

Gene ID 10068

Other Names

Interleukin-18-binding protein, IL-18BP, Tadekinig-alfa, IL18BP

Application Details

WB 1:500-1:2000
IHC 1:50-1:200

Contents

Rabbit IgG in phosphate buffered saline, pH 7.4, 150mM NaCl, 0.02% sodium azide and 50% glycerol, 0.4-0.5mg/ml BSA.

Immunogen

A synthesized peptide derived from human IL18 binding protein

Purification

Affinity-chromatography

Storage

Store at -20°C for one year. For short term storage and frequent use, store at 4°C for up to one month. Avoid repeated freeze-thaw cycles.

Anti-IL18 binding protein Rabbit Monoclonal Antibody - Protein Information

Name IL18BP

Function

Isoform A binds to IL-18 and inhibits its activity. Functions as an inhibitor of the early TH1 cytokine response.

Cellular Location

Secreted.

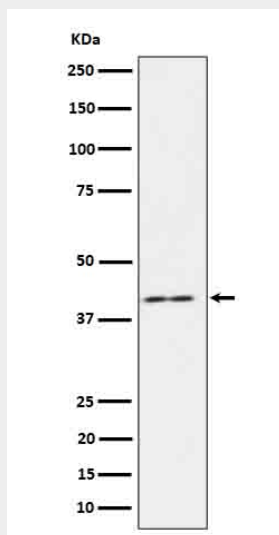
Tissue Location

Strongly expressed in heart, lung, placenta and spleen.

Anti-IL18 binding protein Rabbit Monoclonal Antibody - Protocols

Provided below are standard protocols that you may find useful for product applications.

- [Western Blot](#)
- [Blocking Peptides](#)
- [Dot Blot](#)
- [Immunohistochemistry](#)
- [Immunofluorescence](#)
- [Immunoprecipitation](#)
- [Flow Cytometry](#)
- [Cell Culture](#)

Anti-IL18 binding protein Rabbit Monoclonal Antibody - Images

Western blot analysis of IL18 binding protein in HeLa cell lysate.