

Anti-Ube1L / UBA7 Rabbit Monoclonal Antibody
Catalog # ABO16637**Specification****Anti-Ube1L / UBA7 Rabbit Monoclonal Antibody - Product Information**

Application	WB, IHC, FC
Primary Accession	P41226
Host	Rabbit
Isotype	Rabbit IgG
Reactivity	Rat, Human, Mouse
Clonality	Monoclonal
Format	Liquid

Description

Anti-Ube1L / UBA7 Rabbit Monoclonal Antibody . Tested in WB, IHC, Flow Cytometry applications.
This antibody reacts with Human, Mouse, Rat.

Anti-Ube1L / UBA7 Rabbit Monoclonal Antibody - Additional Information

Gene ID 7318

Other Names

Ubiquitin-like modifier-activating enzyme 7, Ubiquitin-activating enzyme 7, 6.2.1.-, D8,
Ubiquitin-activating enzyme E1 homolog, UBA7 {ECO:0000303|PubMed:28397838,
ECO:0000312|HGNC:HGNC:12471}

Application Details

WB 1:500-1:2000
IHC 1:50-1:200
FC 1:50

Contents

Rabbit IgG in phosphate buffered saline, pH 7.4, 150mM NaCl, 0.02% sodium azide and 50%
glycerol, 0.4-0.5mg/ml BSA.

Immunogen

A synthesized peptide derived from human Ube1L / UBA7

Purification

Affinity-chromatography

Storage

**Store at -20°C for one year. For short term
storage and frequent use, store at 4°C for
up to one month. Avoid repeated
freeze-thaw cycles.**

Anti-Ube1L / UBA7 Rabbit Monoclonal Antibody - Protein Information

Name UBA7 {ECO:0000303|PubMed:28397838, ECO:0000312|HGNC:HGNC:12471}

Function

E1-activating enzyme that catalyzes the covalent conjugation of the ubiquitin-like protein product of ISG15 to additional interferon stimulated proteins (ISGs) as well as other cellular proteins such as P53 in a process termed protein ISGylation (PubMed:27545325). Plays an essential role in antiviral immunity together with ISG15 by restricting the replication of many viruses including rabies virus, influenza virus, sindbis virus, rotavirus or human cytomegalovirus (PubMed:16254333, PubMed:19073728, PubMed:29056542, PubMed:29743376, PubMed:37722521). For example, ISG15 modification of influenza A protein NS1 disrupts the association of the NS1 with importin-alpha leading to NS1 nuclear import inhibition (PubMed:20133869). ISGylation of human cytomegalovirus protein UL26 regulates its stability and inhibits its activities to suppress NF-kappa-B signaling (PubMed:27564865).

Cellular Location

Cytoplasm. Nucleus

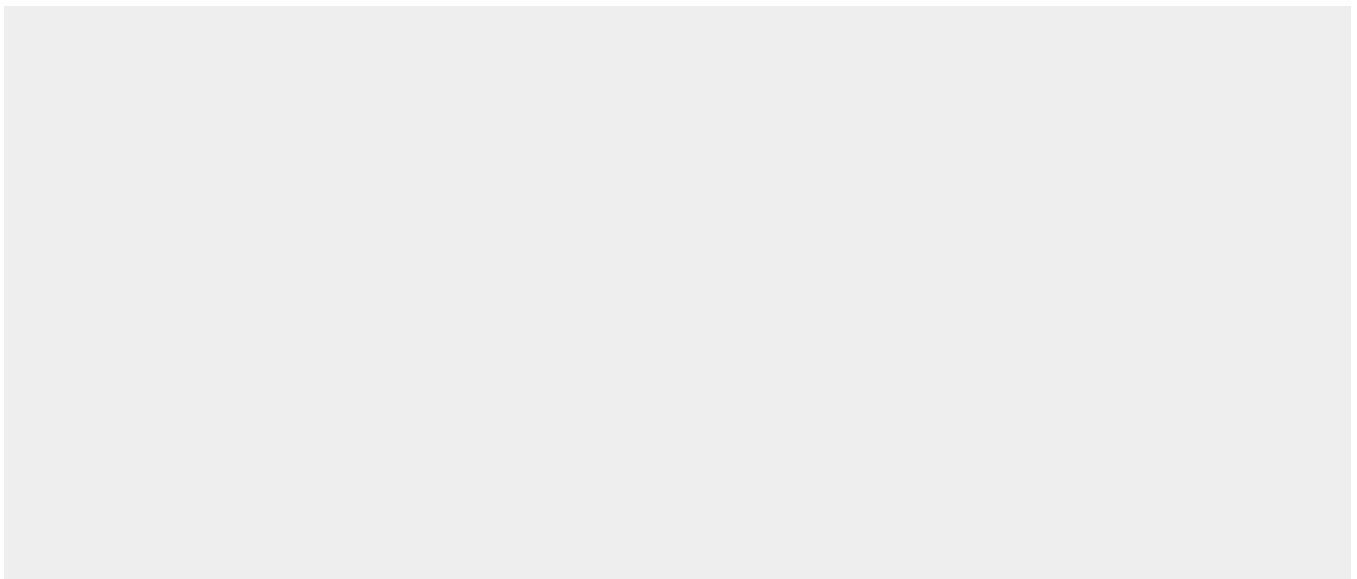
Tissue Location

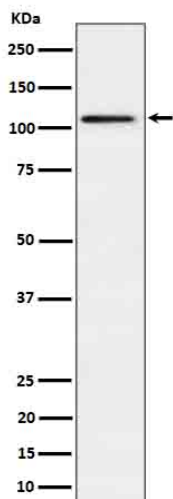
Expressed in a variety of normal and tumor cell types, but is reduced in lung cancer cell lines

Anti-Ube1L / UBA7 Rabbit Monoclonal Antibody - Protocols

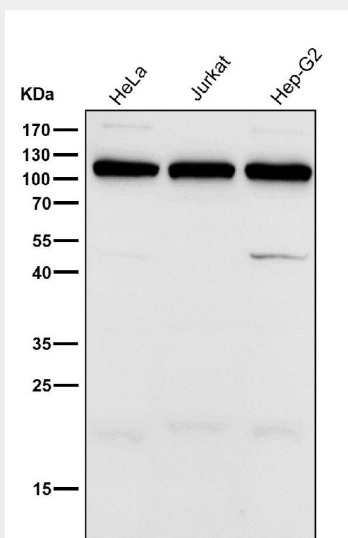
Provided below are standard protocols that you may find useful for product applications.

- [Western Blot](#)
- [Blocking Peptides](#)
- [Dot Blot](#)
- [Immunohistochemistry](#)
- [Immunofluorescence](#)
- [Immunoprecipitation](#)
- [Flow Cytometry](#)
- [Cell Culture](#)

Anti-Ube1L / UBA7 Rabbit Monoclonal Antibody - Images



Western blot analysis of Ube1L / UBA7 in HepG2 cell lysate.



All lanes use the Antibody at 1:2W dilution for 1 hour at room temperature.