

Anti-IL22 Rabbit Monoclonal Antibody
Catalog # ABO16638**Specification**

Anti-IL22 Rabbit Monoclonal Antibody - Product Information

Application	WB
Primary Accession	Q9GZX6
Host	Rabbit
Isotype	Rabbit IgG
Reactivity	Human
Clonality	Monoclonal
Format	Liquid

Description

Anti-IL22 Rabbit Monoclonal Antibody . Tested in WB applications. This antibody reacts with Human.

Anti-IL22 Rabbit Monoclonal Antibody - Additional Information

Gene ID 50616

Other Names

Interleukin-22, IL-22, Cytokine Zcyto18, IL-10-related T-cell-derived-inducible factor, IL-TIF, IL22, ILTIF, ZCYTO18

Application Details

WB 1:500-1:2000

Contents

Rabbit IgG in phosphate buffered saline, pH 7.4, 150mM NaCl, 0.02% sodium azide and 50% glycerol, 0.4-0.5mg/ml BSA.

Immunogen

A synthesized peptide derived from human IL22

Purification

Affinity-chromatography

Storage

Store at -20°C for one year. For short term storage and frequent use, store at 4°C for up to one month. Avoid repeated freeze-thaw cycles.

Anti-IL22 Rabbit Monoclonal Antibody - Protein Information

Name IL22

Synonyms ILTIF, ZCYTO18

Function

Cytokine that plays a critical role in modulating tissue responses during inflammation (PubMed:17204547). Plays an essential role in the regeneration of epithelial cells to maintain barrier function after injury and for the prevention of further tissue damage (PubMed:17204547). Unlike most of the cytokines, has no effect on immune cells. Signals through a heterodimeric receptor composed of two subunits, the specific receptor IL22RA1 which is present on non-immune cells in many organs and the shared subunit IL10RB (PubMed:10875937, PubMed:18599299). Ligation of IL22RA1 with IL22 induces activation of the tyrosine kinases JAK1 and TYK2, which in turn activates STAT3. In turn, promotes cell survival and proliferation through STAT3, ERK1/2 and PI3K/AKT pathways (PubMed:25793261, PubMed:31311100). Promotes phosphorylation of GSK3B at 'Ser-9' and CTTN (By similarity). Promotes epithelial cell spreading (By similarity).

Cellular Location

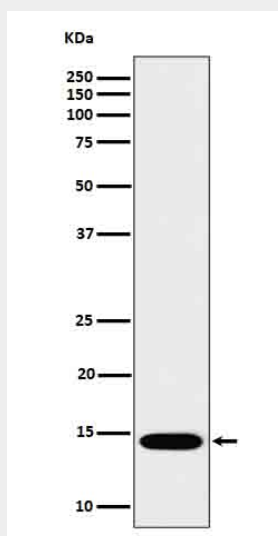
Secreted.

Anti-IL22 Rabbit Monoclonal Antibody - Protocols

Provided below are standard protocols that you may find useful for product applications.

- [Western Blot](#)
- [Blocking Peptides](#)
- [Dot Blot](#)
- [Immunohistochemistry](#)
- [Immunofluorescence](#)
- [Immunoprecipitation](#)
- [Flow Cytometry](#)
- [Cell Culture](#)

Anti-IL22 Rabbit Monoclonal Antibody - Images



Western blot analysis of IL22 in Recombinant Human IL22 protein cell lysate.