

Anti-IL26 Rabbit Monoclonal Antibody
Catalog # ABO16640**Specification**

Anti-IL26 Rabbit Monoclonal Antibody - Product Information

Application	WB
Primary Accession	Q9NPH9
Host	Rabbit
Isotype	Rabbit IgG
Reactivity	Human
Clonality	Monoclonal
Format	Liquid

Description

Anti-IL26 Rabbit Monoclonal Antibody . Tested in WB applications. This antibody reacts with Human.

Anti-IL26 Rabbit Monoclonal Antibody - Additional Information

Gene ID 55801

Other Names

Interleukin-26, IL-26, Protein AK155, IL26, AK155

Application Details

WB 1:500-1:2000

Contents

Rabbit IgG in phosphate buffered saline, pH 7.4, 150mM NaCl, 0.02% sodium azide and 50% glycerol, 0.4-0.5mg/ml BSA.

Immunogen

A synthesized peptide derived from human IL26

Purification

Affinity-chromatography

Storage

Store at -20°C for one year. For short term storage and frequent use, store at 4°C for up to one month. Avoid repeated freeze-thaw cycles.

Anti-IL26 Rabbit Monoclonal Antibody - Protein Information

Name IL26

Synonyms AK155

Function

May play a role in local mechanisms of mucosal immunity and seems to have a pro-inflammatory function. May play a role in inflammatory bowel disease. Activates STAT1 and STAT3, MAPK1/3 (ERK1/2), JUN and AKT. Induces expression of SOCS3, TNF-alpha and IL-8, secretion of IL-8 and IL-10 and surface expression of ICAM1. Decreases proliferation of intestinal epithelial cells. Is inhibited by heparin.

Cellular Location

Secreted.

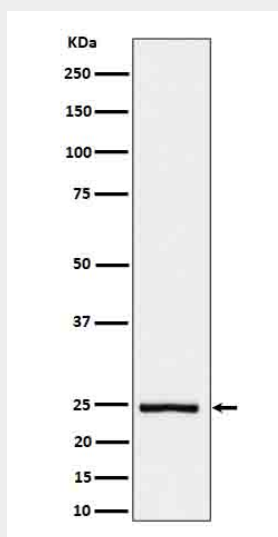
Tissue Location

Expressed in HVS transformed T-cells but not other T-cell lines or primary stimulated T-cells. Expressed in colonic T- cells including Th17 inflammatory T-cells; the expression is significantly increased in serum of patients with Crohn's disease (at protein level).

Anti-IL26 Rabbit Monoclonal Antibody - Protocols

Provided below are standard protocols that you may find useful for product applications.

- [Western Blot](#)
- [Blocking Peptides](#)
- [Dot Blot](#)
- [Immunohistochemistry](#)
- [Immunofluorescence](#)
- [Immunoprecipitation](#)
- [Flow Cytometry](#)
- [Cell Culture](#)

Anti-IL26 Rabbit Monoclonal Antibody - Images

Western blot analysis of IL26 in His-tagged IL26 cell lysate.