

Anti-GAS2 Rabbit Monoclonal Antibody
Catalog # ABO16652**Specification**

Anti-GAS2 Rabbit Monoclonal Antibody - Product Information

Application	WB, IHC
Primary Accession	O43903
Host	Rabbit
Isotype	Rabbit IgG
Reactivity	Human
Clonality	Monoclonal
Format	Liquid

Description

Anti-GAS2 Rabbit Monoclonal Antibody . Tested in WB, IHC applications. This antibody reacts with Human.

Anti-GAS2 Rabbit Monoclonal Antibody - Additional Information

Gene ID 2620

Other Names

Growth arrest-specific protein 2, GAS-2, GAS2

Application Details

WB 1:500-1:2000
IHC 1:50-1:100

Contents

Rabbit IgG in phosphate buffered saline, pH 7.4, 150mM NaCl, 0.02% sodium azide and 50% glycerol, 0.4-0.5mg/ml BSA.

Immunogen

A synthesized peptide derived from human GAS2

Purification

Affinity-chromatography

Storage

Store at -20°C for one year. For short term storage and frequent use, store at 4°C for up to one month. Avoid repeated freeze-thaw cycles.

Anti-GAS2 Rabbit Monoclonal Antibody - Protein Information

Name GAS2

Function

Required to maintain microtubule bundles in inner ear supporting cells, affording them with mechanical stiffness to transmit sound energy through the cochlea.

Cellular Location

Cytoplasm, cytoskeleton, stress fiber. Membrane {ECO:0000250|UniProtKB:P11862}; Peripheral membrane protein {ECO:0000250|UniProtKB:P11862} Note=Component of the microfilament system. Colocalizes with actin fibers at the cell border and along the stress fibers in growth-arrested fibroblasts. Mainly membrane-associated. When hyperphosphorylated, accumulates at membrane ruffles (By similarity) Colocalizes with detyrosinated alpha-tubulin along the length of microtubule bundles in inner and outer pillar cells (By similarity) {ECO:0000250|UniProtKB:P11862}

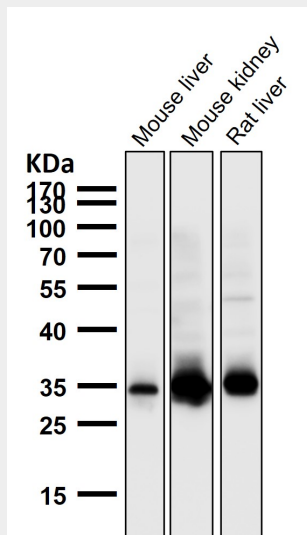
Tissue Location

Ubiquitously expressed with highest levels in liver, lung, and kidney. Not found in spleen

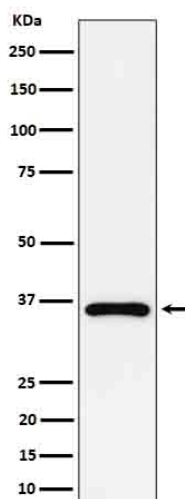
Anti-GAS2 Rabbit Monoclonal Antibody - Protocols

Provided below are standard protocols that you may find useful for product applications.

- [Western Blot](#)
- [Blocking Peptides](#)
- [Dot Blot](#)
- [Immunohistochemistry](#)
- [Immunofluorescence](#)
- [Immunoprecipitation](#)
- [Flow Cytometry](#)
- [Cell Culture](#)

Anti-GAS2 Rabbit Monoclonal Antibody - Images

All lanes use the Antibody at 1:1K dilution for 1 hour at room temperature.



Western blot analysis of GAS2 expression in Jurkat cell lysate.