

Anti-DcR1 / CD263 Rabbit Monoclonal Antibody
Catalog # ABO16657**Specification****Anti-DcR1 / CD263 Rabbit Monoclonal Antibody - Product Information**

Application	WB
Primary Accession	O14798
Host	Rabbit
Isotype	Rabbit IgG
Reactivity	Rat, Human, Mouse
Clonality	Monoclonal
Format	Liquid

Description

Anti-DcR1 / CD263 Rabbit Monoclonal Antibody . Tested in WB, ICC/IF applications. This antibody reacts with Human, Mouse, Rat.

Anti-DcR1 / CD263 Rabbit Monoclonal Antibody - Additional Information

Gene ID 8794

Other Names

Tumor necrosis factor receptor superfamily member 10C, Antagonist decoy receptor for TRAIL/Apo-2L, Decoy TRAIL receptor without death domain, Decoy receptor 1, DcR1, Lymphocyte inhibitor of TRAIL, TNF-related apoptosis-inducing ligand receptor 3, TRAIL receptor 3, TRAIL-R3, TRAIL receptor without an intracellular domain, CD263, TNFRSF10C, DCR1, LIT, TRAILR3, TRID

Application Details

WB 1:500-1:2000
ICC/IF 1:50-1:200

Contents

Rabbit IgG in phosphate buffered saline, pH 7.4, 150mM NaCl, 0.02% sodium azide and 50% glycerol, 0.4-0.5mg/ml BSA.

Immunogen

A synthesized peptide derived from human DcR1 / CD263

Purification

Affinity-chromatography

Storage

Store at -20°C for one year. For short term storage and frequent use, store at 4°C for up to one month. Avoid repeated freeze-thaw cycles.

Anti-DcR1 / CD263 Rabbit Monoclonal Antibody - Protein Information

Name TNFRSF10C

Synonyms DCR1, LIT, TRAILR3, TRID

Function

Receptor for the cytotoxic ligand TRAIL. Lacks a cytoplasmic death domain and hence is not capable of inducing apoptosis. May protect cells against TRAIL mediated apoptosis by competing with TRAIL- R1 and R2 for binding to the ligand.

Cellular Location

Cell membrane; Lipid-anchor, GPI-anchor.

Tissue Location

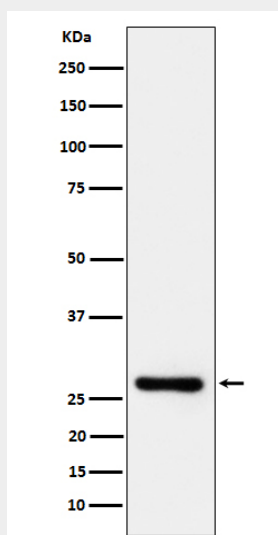
Higher expression in normal tissues than in tumor cell lines. Highly expressed in peripheral blood lymphocytes, spleen, skeletal muscle, placenta, lung and heart

Anti-DcR1 / CD263 Rabbit Monoclonal Antibody - Protocols

Provided below are standard protocols that you may find useful for product applications.

- [Western Blot](#)
- [Blocking Peptides](#)
- [Dot Blot](#)
- [Immunohistochemistry](#)
- [Immunofluorescence](#)
- [Immunoprecipitation](#)
- [Flow Cytometry](#)
- [Cell Culture](#)

Anti-DcR1 / CD263 Rabbit Monoclonal Antibody - Images



Western blot analysis of DcR1/CD263 expression in Jurkat cell lysate.