

Anti-PTBP2 Rabbit Monoclonal Antibody
Catalog # ABO16667**Specification****Anti-PTBP2 Rabbit Monoclonal Antibody - Product Information**

Application	WB
Primary Accession	Q9UKA9
Host	Rabbit
Isotype	Rabbit IgG
Reactivity	Rat, Human, Mouse
Clonality	Monoclonal
Format	Liquid

Description

Anti-PTBP2 Rabbit Monoclonal Antibody . Tested in WB applications. This antibody reacts with Human, Mouse, Rat.

Anti-PTBP2 Rabbit Monoclonal Antibody - Additional Information

Gene ID 58155

Other Names

Polypyrimidine tract-binding protein 2, Neural polypyrimidine tract-binding protein, Neurally-enriched homolog of PTB, PTB-like protein, PTBP2 (http://www.genenames.org/cgi-bin/gene_symbol_report?hgnc_id=17662) HGNC:17662), NPTB, PTB, PTBLP

Application Details

WB 1:500-1:2000

Contents

Rabbit IgG in phosphate buffered saline, pH 7.4, 150mM NaCl, 0.02% sodium azide and 50% glycerol, 0.4-0.5mg/ml BSA.

Immunogen

A synthesized peptide derived from human PTBP2

Purification

Affinity-chromatography

Storage

Store at -20°C for one year. For short term storage and frequent use, store at 4°C for up to one month. Avoid repeated freeze-thaw cycles.

Anti-PTBP2 Rabbit Monoclonal Antibody - Protein Information

Name PTBP2 ([HGNC:17662](#))

Synonyms NPTB, PTB, PTBLP

Function

RNA-binding protein which binds to intronic polypyrimidine tracts and mediates negative regulation of exons splicing. May antagonize in a tissue-specific manner the ability of NOVA1 to activate exon selection. In addition to its function in pre-mRNA splicing, plays also a role in the regulation of translation.

Cellular Location

Nucleus {ECO:0000250|UniProtKB:Q91Z31}.

Tissue Location

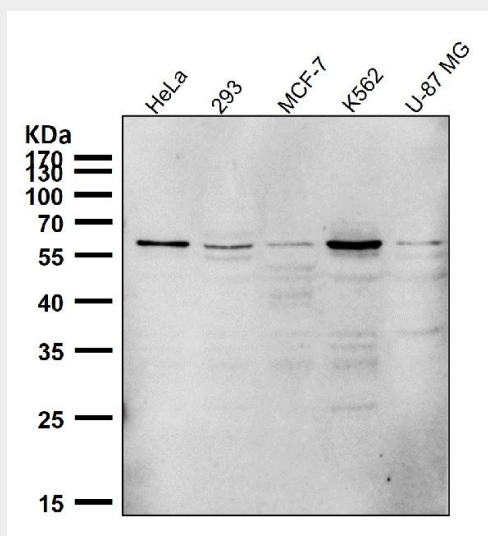
Mainly expressed in brain although also detected in other tissues like heart and skeletal muscle. Isoform 1 and isoform 2 are specifically expressed in neuronal tissues. Isoform 3 and isoform 4 are expressed in non-neuronal tissues. Isoform 5 and isoform 6 are truncated forms expressed in non-neuronal tissues

Anti-PTBP2 Rabbit Monoclonal Antibody - Protocols

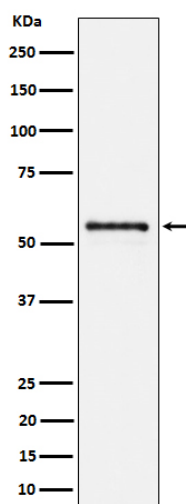
Provided below are standard protocols that you may find useful for product applications.

- [Western Blot](#)
- [Blocking Peptides](#)
- [Dot Blot](#)
- [Immunohistochemistry](#)
- [Immunofluorescence](#)
- [Immunoprecipitation](#)
- [Flow Cytometry](#)
- [Cell Culture](#)

Anti-PTBP2 Rabbit Monoclonal Antibody - Images



All lanes use the Antibody at 1:1K dilution for 1 hour at room temperature.



Western blot analysis of PTBP2 expression in Neuro2a cell lysate.