

**Anti-HoxC6 Rabbit Monoclonal Antibody**  
**Catalog # ABO16670****Specification**

---

**Anti-HoxC6 Rabbit Monoclonal Antibody - Product Information**

Application	WB
Primary Accession	<a href="#">P09630</a>
Host	Rabbit
Isotype	Rabbit IgG
Reactivity	Rat, Human, Mouse
Clonality	Monoclonal
Format	Liquid

**Description**

Anti-HoxC6 Rabbit Monoclonal Antibody . Tested in WB, ICC/IF applications. This antibody reacts with Human, Mouse, Rat.

**Anti-HoxC6 Rabbit Monoclonal Antibody - Additional Information**

**Gene ID** 3223

**Other Names**

Homeobox protein Hox-C6, Homeobox protein CP25, Homeobox protein HHO.C8, Homeobox protein Hox-3C, HOXC6, HOX3C

**Application Details**

WB 1:500-1:2000<br>ICC/IF 1:50-1:200

**Contents**

Rabbit IgG in phosphate buffered saline, pH 7.4, 150mM NaCl, 0.02% sodium azide and 50% glycerol, 0.4-0.5mg/ml BSA.

**Immunogen**

A synthesized peptide derived from human HoxC6

**Purification**

Affinity-chromatography

**Storage**

**Store at -20°C for one year. For short term storage and frequent use, store at 4°C for up to one month. Avoid repeated freeze-thaw cycles.**

**Anti-HoxC6 Rabbit Monoclonal Antibody - Protein Information**

**Name** HOXC6

**Synonyms** HOX3C

**Function**

Sequence-specific transcription factor which is part of a developmental regulatory system that provides cells with specific positional identities on the anterior-posterior axis.

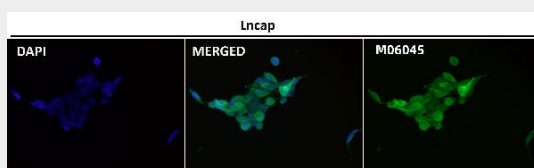
**Cellular Location**

Nucleus.

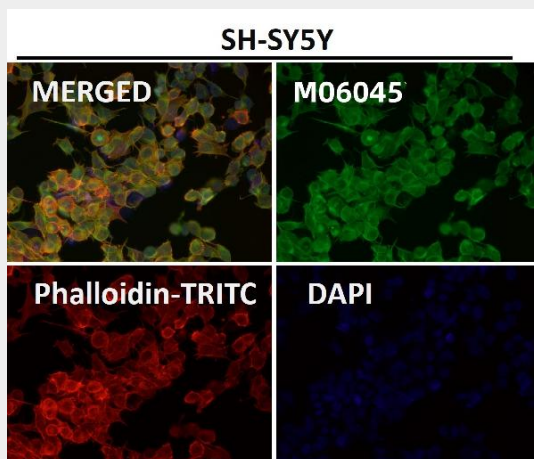
**Anti-HoxC6 Rabbit Monoclonal Antibody - Protocols**

Provided below are standard protocols that you may find useful for product applications.

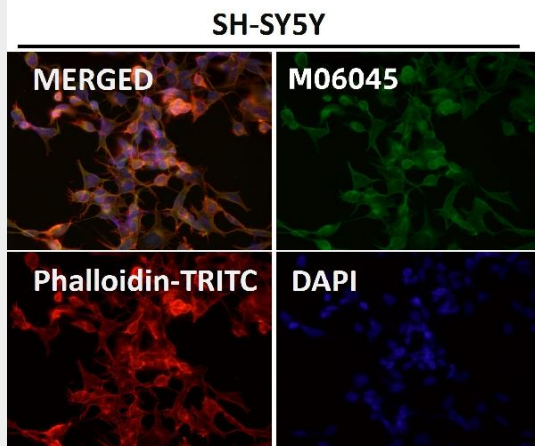
- [Western Blot](#)
- [Blocking Peptides](#)
- [Dot Blot](#)
- [Immunohistochemistry](#)
- [Immunofluorescence](#)
- [Immunoprecipitation](#)
- [Flow Cytometry](#)
- [Cell Culture](#)

**Anti-HoxC6 Rabbit Monoclonal Antibody - Images**

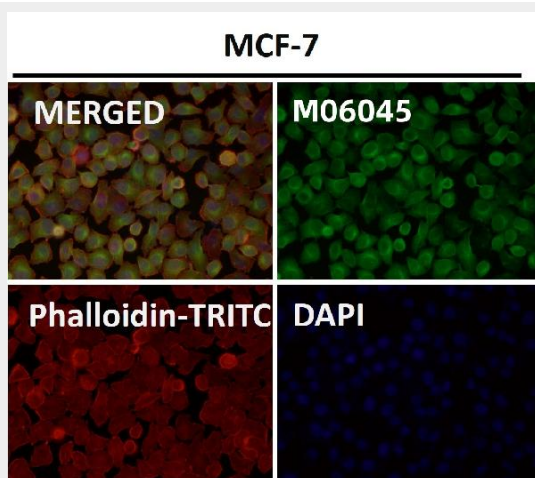
Immunofluorescent analysis using the Antibody at 1:50 dilution.



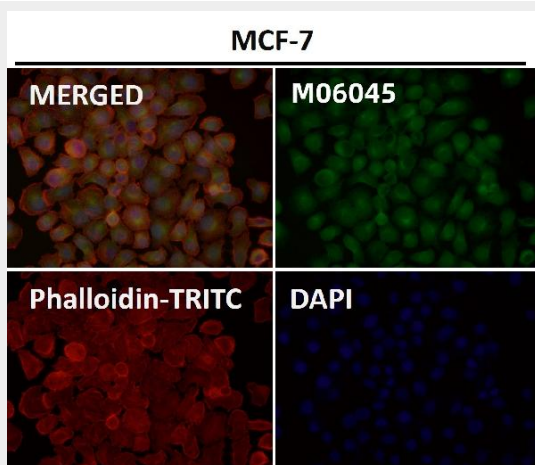
Immunofluorescent analysis using the Antibody at 1:50 dilution.



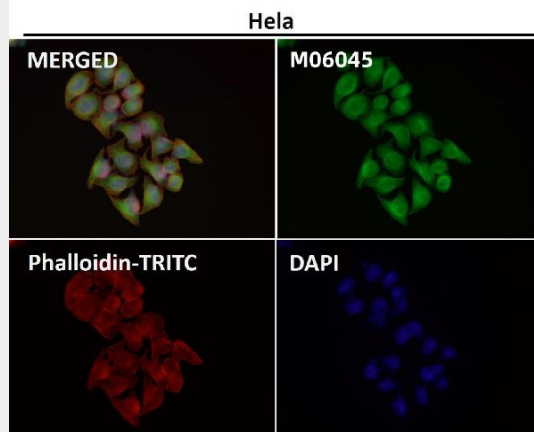
Immunofluorescent analysis using the Antibody at 1:150 dilution.



Immunofluorescent analysis using the Antibody at 1:50 dilution.



Immunofluorescent analysis using the Antibody at 1:150 dilution.



Immunofluorescent analysis using the Antibody at 1:50 dilution.

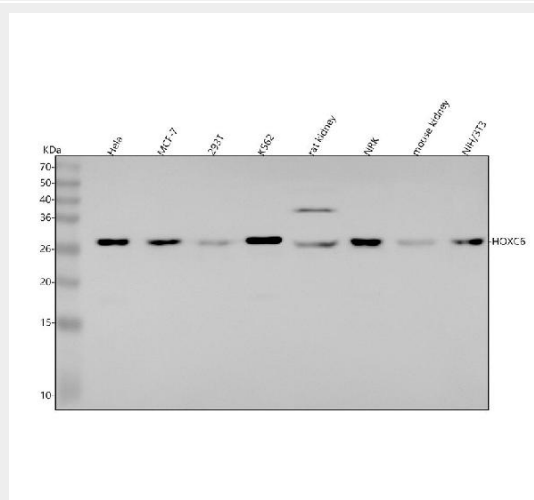


Figure 1. Western blot analysis of HoxC6 using anti-HoxC6 antibody (M06045).

Electrophoresis was performed on a 5-20% SDS-PAGE gel at 70V (Stacking gel) / 90V (Resolving gel) for 2-3 hours. The sample well of each lane was loaded with 30 ug of sample under reducing conditions.

- Lane 1: human HeLa whole cell lysates,
- Lane 2: human MCF-7 whole cell lysates,
- Lane 3: human 293T whole cell lysates,
- Lane 4: human K562 whole cell lysates,
- Lane 5: rat kidney tissue lysates,
- Lane 6: rat NRK whole cell lysates,
- Lane 7: mouse kidney tissue lysates,
- Lane 8: mouse NIH/3T3 whole cell lysates.

After electrophoresis, proteins were transferred to a nitrocellulose membrane at 150 mA for 50-90 minutes. Blocked the membrane with 5% non-fat milk/TBS for 1.5 hour at RT. The membrane was incubated with rabbit anti-HoxC6 antigen affinity purified monoclonal antibody (Catalog # M06045) at 1:500 overnight at 4°C, then washed with TBS-0.1%Tween 3 times with 5 minutes each and probed with a goat anti-rabbit IgG-HRP secondary antibody at a dilution of 1:500 for 1.5 hour at RT. The signal is developed using an Enhanced Chemiluminescent detection (ECL) kit (Catalog # EK1002) with Tanon 5200 system. A specific band was detected for HoxC6 at approximately 26,27 kDa. The expected band size for HoxC6 is at 27 kDa.