

Anti-EXOC2 Rabbit Monoclonal Antibody
Catalog # ABO16678**Specification**

Anti-EXOC2 Rabbit Monoclonal Antibody - Product Information

Application	WB
Primary Accession	Q96KP1
Host	Rabbit
Isotype	Rabbit IgG
Reactivity	Rat, Human, Mouse
Clonality	Monoclonal
Format	Liquid

Description

Anti-EXOC2 Rabbit Monoclonal Antibody . Tested in WB applications. This antibody reacts with Human, Mouse, Rat.

Anti-EXOC2 Rabbit Monoclonal Antibody - Additional Information

Gene ID 55770

Other Names

Exocyst complex component 2, Exocyst complex component Sec5, EXOC2, SEC5, SEC5L1

Application Details

WB 1:500-1:2000

Contents

Rabbit IgG in phosphate buffered saline, pH 7.4, 150mM NaCl, 0.02% sodium azide and 50% glycerol, 0.4-0.5mg/ml BSA.

Immunogen

A synthesized peptide derived from human EXOC2

Purification

Affinity-chromatography

Storage

Store at -20°C for one year. For short term storage and frequent use, store at 4°C for up to one month. Avoid repeated freeze-thaw cycles.

Anti-EXOC2 Rabbit Monoclonal Antibody - Protein Information

Name EXOC2

Synonyms SEC5, SEC5L1

Function

Component of the exocyst complex involved in the docking of exocytic vesicles with fusion sites on the plasma membrane.

Cellular Location

Midbody, Midbody ring Note=Recruitment to the midbody does not require RALA, nor RALB (PubMed:18756269). Colocalizes with CNTRL/centriolin at the midbody ring (PubMed:16213214).

Tissue Location

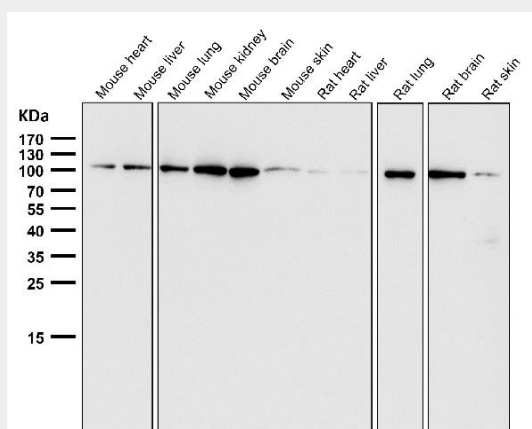
Widely expressed with highest levels in brain and placenta.

Anti-EXOC2 Rabbit Monoclonal Antibody - Protocols

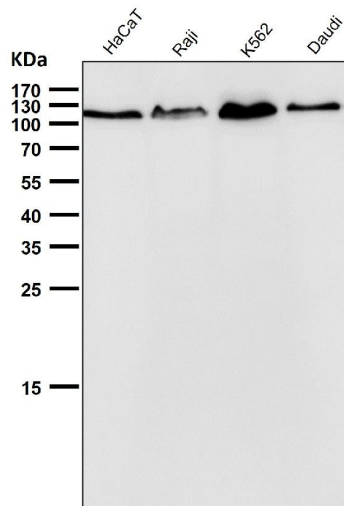
Provided below are standard protocols that you may find useful for product applications.

- [Western Blot](#)
- [Blocking Peptides](#)
- [Dot Blot](#)
- [Immunohistochemistry](#)
- [Immunofluorescence](#)
- [Immunoprecipitation](#)
- [Flow Cytometry](#)
- [Cell Culture](#)

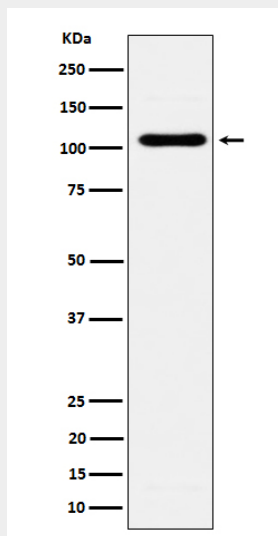
Anti-EXOC2 Rabbit Monoclonal Antibody - Images



All lanes use the Antibody at 1:3K dilution for 1 hour at room temperature.



All lanes use the Antibody at 1:3K dilution for 1 hour at room temperature.



Western blot analysis of EXOC2 expression in BxPC-3 cell lysate.