

**Anti-Desmocollin 1 Rabbit Monoclonal Antibody**  
**Catalog # ABO16685****Specification**

---

**Anti-Desmocollin 1 Rabbit Monoclonal Antibody - Product Information**

Application	WB
Primary Accession	<a href="#">Q08554</a>
Host	Rabbit
Isotype	Rabbit IgG
Reactivity	Rat, Human, Mouse
Clonality	Monoclonal
Format	Liquid

**Description**

Anti-Desmocollin 1 Rabbit Monoclonal Antibody . Tested in WB applications. This antibody reacts with Human, Mouse, Rat.

**Anti-Desmocollin 1 Rabbit Monoclonal Antibody - Additional Information**

**Gene ID** 1823

**Other Names**

Desmocollin-1, Cadherin family member 1, Desmosomal glycoprotein 2/3, DG2/DG3, DSC1, CDHF1

**Application Details**

WB 1:500-1:2000

**Contents**

Rabbit IgG in phosphate buffered saline, pH 7.4, 150mM NaCl, 0.02% sodium azide and 50% glycerol, 0.4-0.5mg/ml BSA.

**Immunogen**

A synthesized peptide derived from human Desmocollin 1

**Purification**

Affinity-chromatography

**Storage**

**Store at -20°C for one year. For short term storage and frequent use, store at 4°C for up to one month. Avoid repeated freeze-thaw cycles.**

**Anti-Desmocollin 1 Rabbit Monoclonal Antibody - Protein Information**

**Name** DSC1

**Synonyms** CDHF1

**Function**

A component of desmosome cell-cell junctions which are required for positive regulation of cellular adhesion (By similarity). Required for desmosome adhesion strength between the granular layers of the epidermis, as a result moderates epidermal proliferation and differentiation (By similarity). Is therefore required to maintain postnatal epidermal barrier function and normal hair follicle morphology into adulthood (By similarity).

**Cellular Location**

Cell membrane; Single-pass type I membrane protein. Cell junction, desmosome  
{ECO:0000250|UniProtKB:P55849}

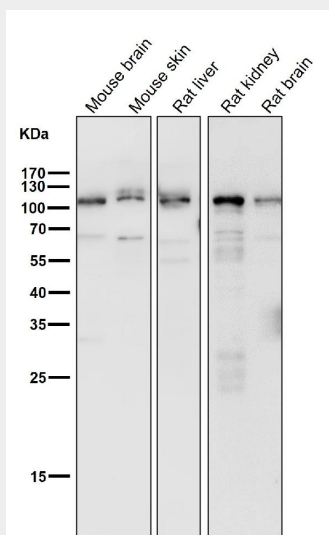
**Tissue Location**

Strongly expressed in epidermis, less in lymph node and tongue.

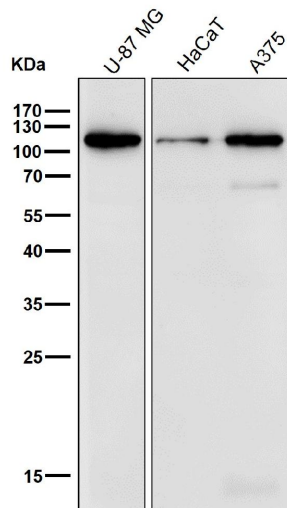
**Anti-Desmocollin 1 Rabbit Monoclonal Antibody - Protocols**

Provided below are standard protocols that you may find useful for product applications.

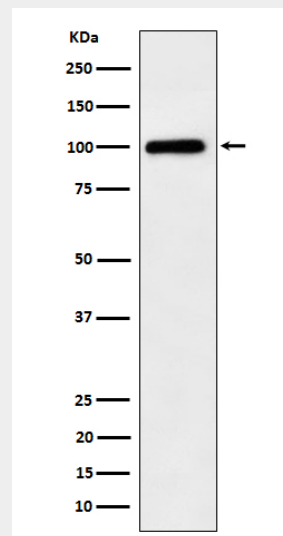
- [Western Blot](#)
- [Blocking Peptides](#)
- [Dot Blot](#)
- [Immunohistochemistry](#)
- [Immunofluorescence](#)
- [Immunoprecipitation](#)
- [Flow Cytometry](#)
- [Cell Culture](#)

**Anti-Desmocollin 1 Rabbit Monoclonal Antibody - Images**

All lanes use the Antibody at 1:1K dilution for 1 hour at room temperature.



All lanes use the Antibody at 1:1K dilution for 1 hour at room temperature.



Western blot analysis of Desmocollin 1 expression in A375 cell lysate.