

Anti-Tbp7 Rabbit Monoclonal Antibody
Catalog # ABO16692**Specification**

Anti-Tbp7 Rabbit Monoclonal Antibody - Product Information

Application	WB
Primary Accession	P43686
Host	Rabbit
Isotype	Rabbit IgG
Reactivity	Rat, Human, Mouse
Clonality	Monoclonal
Format	Liquid

Description

Anti-Tbp7 Rabbit Monoclonal Antibody . Tested in WB, ICC/IF applications. This antibody reacts with Human, Mouse, Rat.

Anti-Tbp7 Rabbit Monoclonal Antibody - Additional Information

Gene ID 5704

Other Names

26S proteasome regulatory subunit 6B, 26S proteasome AAA-ATPase subunit RPT3, MB67-interacting protein, MIP224, Proteasome 26S subunit ATPase 4, Tat-binding protein 7, TBP-7, PSMC4, MIP224, TBP7

Application Details

WB 1:500-1:2000
ICC/IF 1:50-1:200

Contents

Rabbit IgG in phosphate buffered saline, pH 7.4, 150mM NaCl, 0.02% sodium azide and 50% glycerol, 0.4-0.5mg/ml BSA.

Immunogen

A synthesized peptide derived from human Tbp7

Purification

Affinity-chromatography

Storage

Store at -20°C for one year. For short term storage and frequent use, store at 4°C for up to one month. Avoid repeated freeze-thaw cycles.

Anti-Tbp7 Rabbit Monoclonal Antibody - Protein Information

Name PSMC4

Synonyms MIP224, TBP7

Function

Component of the 26S proteasome, a multiprotein complex involved in the ATP-dependent degradation of ubiquitinated proteins. This complex plays a key role in the maintenance of protein homeostasis by removing misfolded or damaged proteins, which could impair cellular functions, and by removing proteins whose functions are no longer required. Therefore, the proteasome participates in numerous cellular processes, including cell cycle progression, apoptosis, or DNA damage repair. PSMC4 belongs to the heterohexameric ring of AAA (ATPases associated with diverse cellular activities) proteins that unfolds ubiquitinated target proteins that are concurrently translocated into a proteolytic chamber and degraded into peptides.

Cellular Location

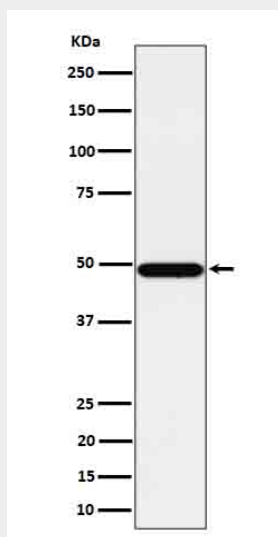
Cytoplasm. Nucleus.

Anti-Tbp7 Rabbit Monoclonal Antibody - Protocols

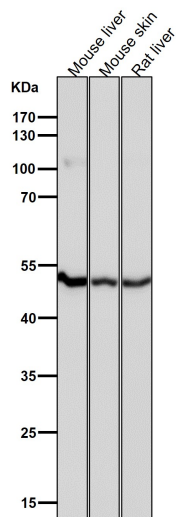
Provided below are standard protocols that you may find useful for product applications.

- [Western Blot](#)
- [Blocking Peptides](#)
- [Dot Blot](#)
- [Immunohistochemistry](#)
- [Immunofluorescence](#)
- [Immunoprecipitation](#)
- [Flow Cytometry](#)
- [Cell Culture](#)

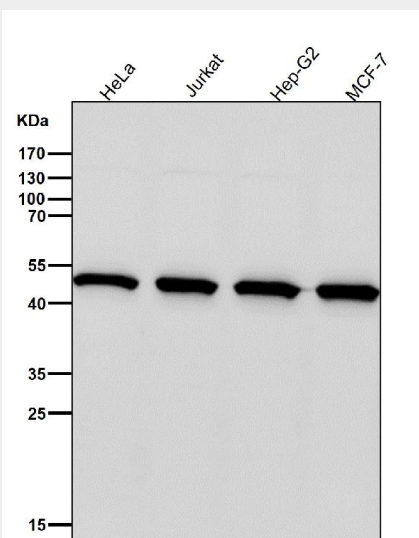
Anti-Tbp7 Rabbit Monoclonal Antibody - Images



Western blot analysis of Tbp7 expression in HeLa cell lysate.



All lanes use the Antibody at 1:3W dilution for 1 hour at room temperature.



All lanes use the Antibody at 1:3W dilution for 1 hour at room temperature.