

Anti-PSIP1 / LEDGF Rabbit Monoclonal Antibody
Catalog # ABO16695**Specification****Anti-PSIP1 / LEDGF Rabbit Monoclonal Antibody - Product Information**

Application	WB, IHC
Primary Accession	O75475
Host	Rabbit
Isotype	Rabbit IgG
Reactivity	Human
Clonality	Monoclonal
Format	Liquid

Description

Anti-PSIP1 / LEDGF Rabbit Monoclonal Antibody . Tested in WB, IHC, ICC/IF applications. This antibody reacts with Human.

Anti-PSIP1 / LEDGF Rabbit Monoclonal Antibody - Additional Information

Gene ID 11168

Other Names

PC4 and SFRS1-interacting protein, CLL-associated antigen KW-7, Dense fine speckles 70 kDa protein, DFS 70, Lens epithelium-derived growth factor, Transcriptional coactivator p75/p52, PSIP1, DFS70, LEDGF, PSIP2

Application Details

WB 1:500-1:2000
IHC 1:50-1:200
ICC/IF 1:50-1:200

Contents

Rabbit IgG in phosphate buffered saline, pH 7.4, 150mM NaCl, 0.02% sodium azide and 50% glycerol, 0.4-0.5mg/ml BSA.

Immunogen

A synthesized peptide derived from human PSIP1 / LEDGF

Purification

Affinity-chromatography

Storage

Store at -20°C for one year. For short term storage and frequent use, store at 4°C for up to one month. Avoid repeated freeze-thaw cycles.

Anti-PSIP1 / LEDGF Rabbit Monoclonal Antibody - Protein Information

Name PSIP1

Synonyms DFS70, LEDGF, PSIP2

Function

Transcriptional coactivator involved in neuroepithelial stem cell differentiation and neurogenesis. Involved in particular in lens epithelial cell gene regulation and stress responses. May play an important role in lens epithelial to fiber cell terminal differentiation. May play a protective role during stress-induced apoptosis. Isoform 2 is a more general and stronger transcriptional coactivator. Isoform 2 may also act as an adapter to coordinate pre- mRNA splicing. Cellular cofactor for lentiviral integration.

Cellular Location

Nucleus. Note=Remains chromatin-associated throughout the cell cycle

Tissue Location

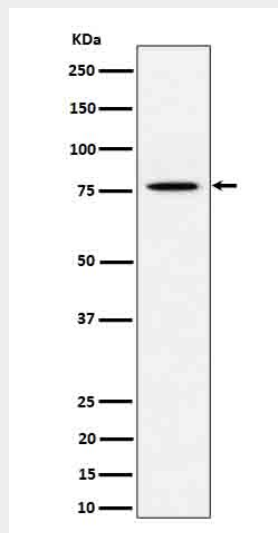
Widely expressed. Expressed at high level in the thymus. Expressed in fetal and adult brain. Expressed in neurons, but not astrocytes. Markedly elevated in fetal as compared to adult brain In the adult brain, expressed in the subventricular zone (SVZ), in hippocampus, and undetectable elsewhere. In the fetal brain, expressed in the germinal neuroepithelium and cortical plate regions

Anti-PSIP1 / LEDGF Rabbit Monoclonal Antibody - Protocols

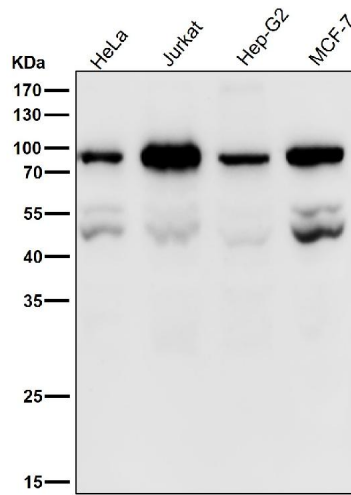
Provided below are standard protocols that you may find useful for product applications.

- [Western Blot](#)
- [Blocking Peptides](#)
- [Dot Blot](#)
- [Immunohistochemistry](#)
- [Immunofluorescence](#)
- [Immunoprecipitation](#)
- [Flow Cytometry](#)
- [Cell Culture](#)

Anti-PSIP1 / LEDGF Rabbit Monoclonal Antibody - Images



Western blot analysis of PSIP1 / LEDGF expression in HeLa cell lysate.



All lanes use the Antibody at 1:1W dilution for 1 hour at room temperature.