

Anti-Phospho-BCAR1 (Y410) Rabbit Monoclonal Antibody
Catalog # ABO16732**Specification**

Anti-Phospho-BCAR1 (Y410) Rabbit Monoclonal Antibody - Product Information

Application	WB
Primary Accession	P56945
Host	Rabbit
Isotype	Rabbit IgG
Reactivity	Human
Clonality	Monoclonal
Format	Liquid

Description

Anti-Phospho-BCAR1 (Y410) Rabbit Monoclonal Antibody . Tested in WB applications. This antibody reacts with Human.

Anti-Phospho-BCAR1 (Y410) Rabbit Monoclonal Antibody - Additional Information

Gene ID 9564

Other Names

Breast cancer anti-estrogen resistance protein 1, CRK-associated substrate, Cas scaffolding protein family member 1, p130cas, BCAR1, CAS, CASS1, CRKAS

Application Details

WB 1:500-1:2000

Contents

Rabbit IgG in phosphate buffered saline, pH 7.4, 150mM NaCl, 0.02% sodium azide and 50% glycerol, 0.4-0.5mg/ml BSA.

Immunogen

A synthesized peptide derived from human Phospho-BCAR1 (Y410)

Purification

Affinity-chromatography

Storage

Store at -20°C for one year. For short term storage and frequent use, store at 4°C for up to one month. Avoid repeated freeze-thaw cycles.

Anti-Phospho-BCAR1 (Y410) Rabbit Monoclonal Antibody - Protein Information

Name BCAR1

Synonyms CAS, CASS1, CRKAS

Function

Docking protein which plays a central coordinating role for tyrosine kinase-based signaling related to cell adhesion (PubMed:12432078, PubMed:12832404). Implicated in induction of cell migration and cell branching (PubMed:12432078, PubMed:12832404, PubMed:17038317). Involved in the BCAR3-mediated inhibition of TGFB signaling (By similarity).

Cellular Location

Cell junction, focal adhesion. Cytoplasm Cell projection, axon {ECO:0000250|UniProtKB:Q61140} Note=Unphosphorylated form localizes in the cytoplasm (By similarity) Localizes to focal adhesion sites following integrin engagement (By similarity). {ECO:0000250|UniProtKB:Q61140}

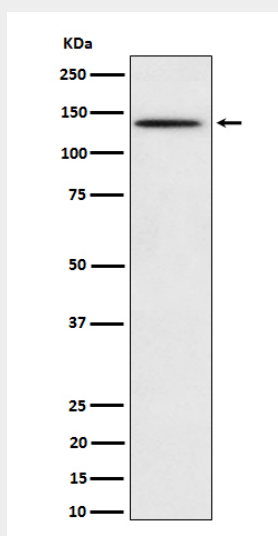
Tissue Location

Expressed in B-cells (at protein level) (PubMed:9020138). Widely expressed with an abundant expression in the testis (PubMed:10639512). Low level of expression seen in the liver, thymus, and peripheral blood leukocytes (PubMed:10639512)

Anti-Phospho-BCAR1 (Y410) Rabbit Monoclonal Antibody - Protocols

Provided below are standard protocols that you may find useful for product applications.

- [Western Blot](#)
- [Blocking Peptides](#)
- [Dot Blot](#)
- [Immunohistochemistry](#)
- [Immunofluorescence](#)
- [Immunoprecipitation](#)
- [Flow Cytometry](#)
- [Cell Culture](#)

Anti-Phospho-BCAR1 (Y410) Rabbit Monoclonal Antibody - Images

Western blot analysis of Phospho-BCAR1 (Y410) expression in HeLa treated with pervanadate cell lysate.