

Anti-FRG1 Rabbit Monoclonal Antibody
Catalog # ABO16736**Specification**

Anti-FRG1 Rabbit Monoclonal Antibody - Product Information

Application	WB
Primary Accession	Q14331
Host	Rabbit
Isotype	Rabbit IgG
Reactivity	Rat, Human, Mouse
Clonality	Monoclonal
Format	Liquid

Description

Anti-FRG1 Rabbit Monoclonal Antibody . Tested in WB, ICC/IF applications. This antibody reacts with Human, Mouse, Rat.

Anti-FRG1 Rabbit Monoclonal Antibody - Additional Information

Gene ID 2483

Other Names

Protein FRG1, FSHD region gene 1 protein, FRG1 (http://www.genenames.org/cgi-bin/gene_symbol_report?hgnc_id=3954)
HGNC:3954

Application Details

WB 1:500-1:2000
ICC/IF 1:50-1:200

Contents

Rabbit IgG in phosphate buffered saline, pH 7.4, 150mM NaCl, 0.02% sodium azide and 50% glycerol, 0.4-0.5mg/ml BSA.

Immunogen

A synthesized peptide derived from human FRG1

Purification

Affinity-chromatography

Storage

Store at -20°C for one year. For short term storage and frequent use, store at 4°C for up to one month. Avoid repeated freeze-thaw cycles.

Anti-FRG1 Rabbit Monoclonal Antibody - Protein Information

Name FRG1 ([HGNC:3954](#))

Function

Binds to mRNA in a sequence-independent manner. May play a role in regulation of pre-mRNA splicing or in the assembly of rRNA into ribosomal subunits. May be involved in mRNA transport. May be involved in epigenetic regulation of muscle differentiation through regulation of activity of the histone-lysine N-methyltransferase KMT5B.

Cellular Location

Nucleus, Cajal body. Nucleus, nucleolus. Cytoplasm. Cytoplasm, myofibril, sarcomere, Z line. Note=Localization changes during myogenesis from mainly cytoplasmic in undifferentiated myoblasts, to strongly nucleolar in early myotubes and back to cytoplasmic 5 days post-differentiation (PubMed:20970242). Localized at the Z-line in the sarcomere of matured myotubes 8 days post-differentiation (PubMed:20970242).

Tissue Location

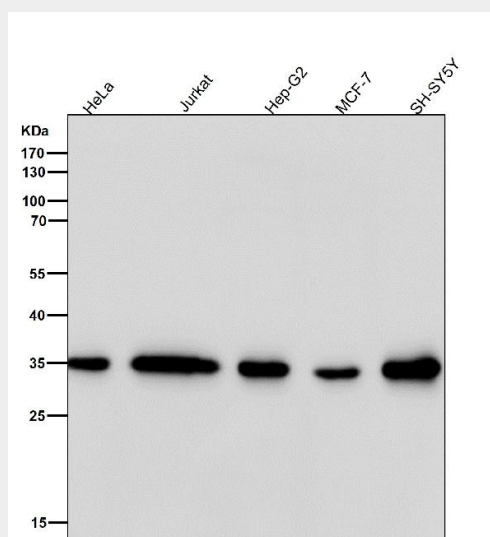
Expressed in adult muscle, lymphocytes, fetal brain, muscle, and placenta. Also expressed in the smooth muscle of arteries and veins, the sweat glands and the epidermis

Anti-FRG1 Rabbit Monoclonal Antibody - Protocols

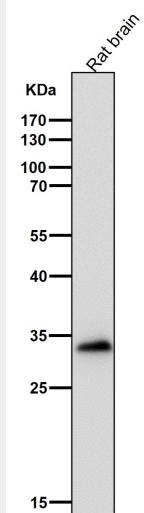
Provided below are standard protocols that you may find useful for product applications.

- [Western Blot](#)
- [Blocking Peptides](#)
- [Dot Blot](#)
- [Immunohistochemistry](#)
- [Immunofluorescence](#)
- [Immunoprecipitation](#)
- [Flow Cytometry](#)
- [Cell Culture](#)

Anti-FRG1 Rabbit Monoclonal Antibody - Images



All lanes use the Antibody at 1:3K dilution for 1 hour at room temperature.



All lanes use the Antibody at 1:3K dilution for 1 hour at room temperature.