

Anti-Myeloperoxidase Rabbit Monoclonal Antibody
Catalog # ABO16742**Specification****Anti-Myeloperoxidase Rabbit Monoclonal Antibody - Product Information**

Application	WB, IHC
Primary Accession	P05164
Host	Rabbit
Isotype	Rabbit IgG
Reactivity	Rat, Human, Mouse
Clonality	Monoclonal
Format	Liquid

Description

Anti-Myeloperoxidase Rabbit Monoclonal Antibody . Tested in WB, IHC applications. This antibody reacts with Human, Mouse, Rat.

Anti-Myeloperoxidase Rabbit Monoclonal Antibody - Additional Information

Gene ID 4353

Other Names

Myeloperoxidase, MPO, 1.11.2.2, Myeloperoxidase, 89 kDa myeloperoxidase, 84 kDa myeloperoxidase, Myeloperoxidase light chain, Myeloperoxidase heavy chain, MPO ([HGNC:7218](http://www.genenames.org/cgi-bin/gene_symbol_report?hgnc_id=7218))

Application Details

WB 1:500-1:2000
IHC 1:50-1:200

Contents

Rabbit IgG in phosphate buffered saline, pH 7.4, 150mM NaCl, 0.02% sodium azide and 50% glycerol, 0.4-0.5mg/ml BSA.

Immunogen

A synthesized peptide derived from human Myeloperoxidase

Purification

Affinity-chromatography

Storage

Store at -20°C for one year. For short term storage and frequent use, store at 4°C for up to one month. Avoid repeated freeze-thaw cycles.

Anti-Myeloperoxidase Rabbit Monoclonal Antibody - Protein Information

Name MPO ([HGNC:7218](#))

Function

Part of the host defense system of polymorphonuclear leukocytes. It is responsible for microbicidal activity against a wide range of organisms. In the stimulated PMN, MPO catalyzes the production of hypohalous acids, primarily hypochlorous acid in physiologic situations, and other toxic intermediates that greatly enhance PMN microbicidal activity (PubMed:9922160). Mediates the proteolytic cleavage of alpha-1-microglobulin to form t-alpha-1-microglobulin, which potently inhibits oxidation of low-density lipoprotein particles and limits vascular damage (PubMed:25698971).

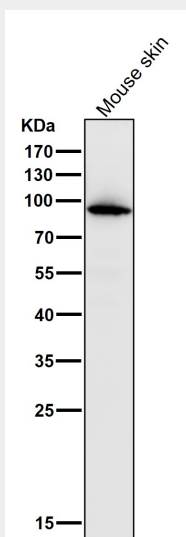
Cellular Location

Lysosome.

Anti-Myeloperoxidase Rabbit Monoclonal Antibody - Protocols

Provided below are standard protocols that you may find useful for product applications.

- [Western Blot](#)
- [Blocking Peptides](#)
- [Dot Blot](#)
- [Immunohistochemistry](#)
- [Immunofluorescence](#)
- [Immunoprecipitation](#)
- [Flow Cytometry](#)
- [Cell Culture](#)

Anti-Myeloperoxidase Rabbit Monoclonal Antibody - Images

All lanes use the Antibody at 1:1K dilution for 1 hour at room temperature.